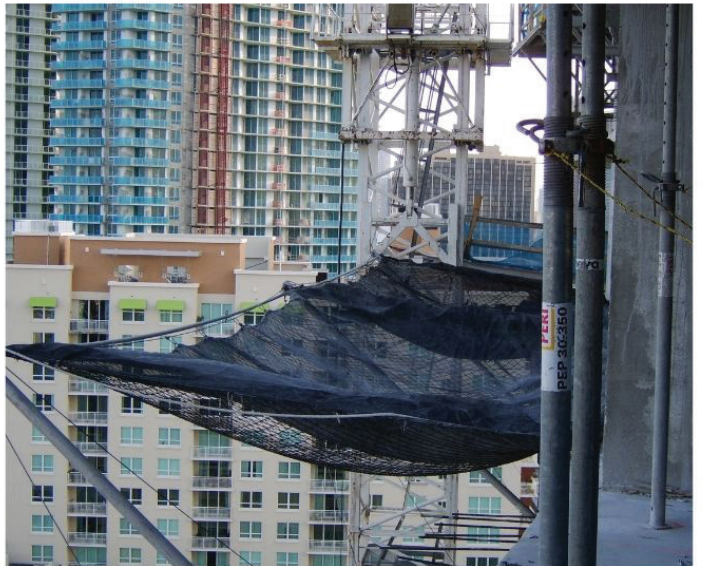
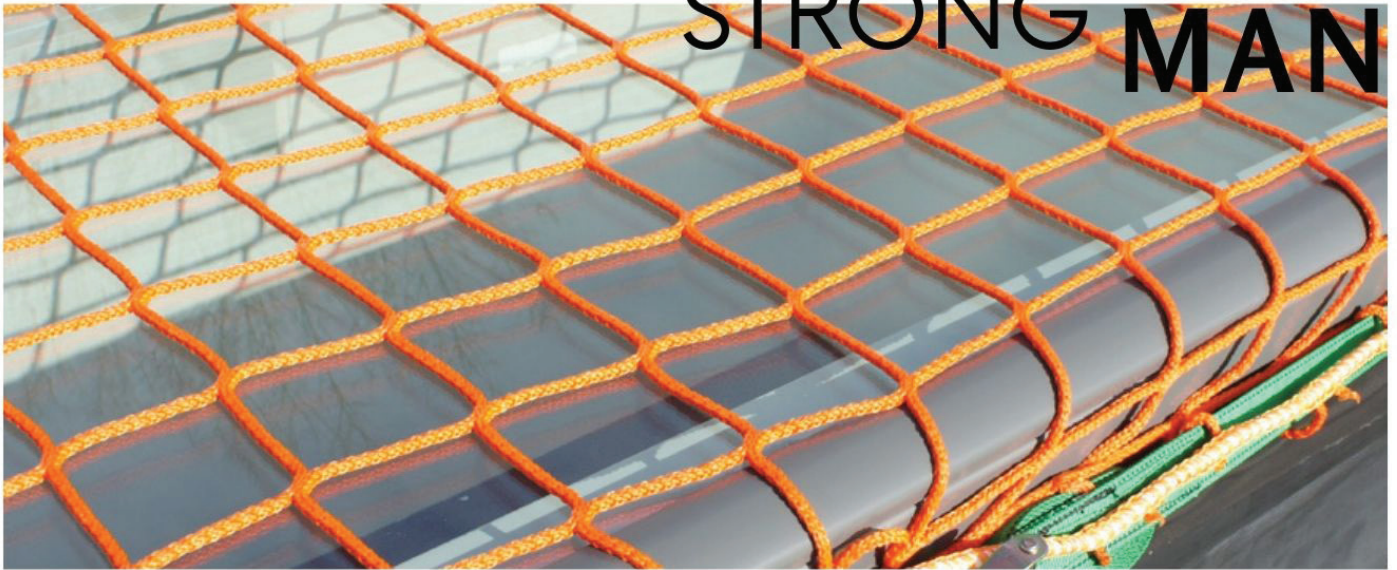


FALL PROTECTION & PREVENTION PRODUCTS
COMMERICAL & MILITARY GRADE LIFTING NETS
STRONG BLOCK CONTAINMENT NETS
PERSONNEL SAFETY NETS



STRONG MAN



SAFETY. SERVICE. SOLUTIONS.

STRONGMAN.COM

800.950.6999

SALES@STRONGMAN.COM

Strong Man Safety Products

SAFETY. SERVICE. SOLUTIONS

SALES@STRONGMAN.COM

Personnel Safety Net

SURROUND & PROTECT

Personnel Safety Nets (PSNs) from Strong Man provide fall protection while meeting strict OSHA and ANSI requirements. Available in stock and custom sizes, Strong Man designs safety systems that provide maximum protection to your worksite.

- Custom Configured
- ANSI & OSHA Compliant
- Retractable and Modular
- Dynamically Tested



The shock-absorbing diamond mesh of the Strong Man PSN contains inhibitors that protect it from UV degradation. The PSN's high strength rating and optional fine mesh liner make it suitable to catch construction debris of all sizes - from paint chips to large, concrete spalling.



OSHA & ANSI COMPLIANT

Manufactured and compliance-tested to meet ANSI A10.11-2016 safety standards, Strong Man PSNs are tested to a minimum impact rating of 17,500 pounds.

Strong Man PSNs meet OSHA Standard 1926.501 Duty to fall protection, and OSHA 1926.502(c) Criteria for Safety Net Systems.

We construct our safety nets using top-quality materials and assembly methods to assure the highest level of safety in the field, so that you can concentrate on the business of construction.

INDUSTRY-LEADING FALL PROTECTION



Falls are the #1 cause of severe injury and fatality on construction sites in the United States, widely preventable through the use of an Strong Man Personnel Safety Net.

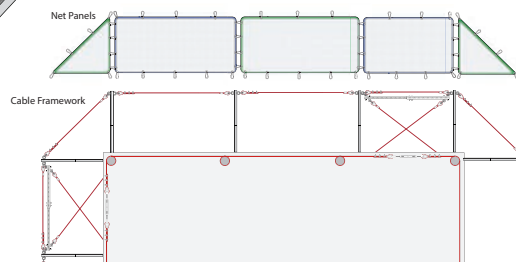
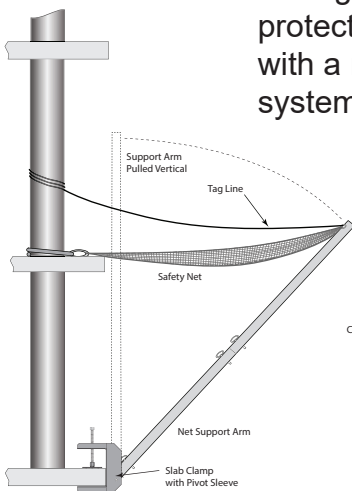
Personnel netting is not only an on-the-job safety requirement, it also provides confidence to your crews, can reduce insurance premiums, and allows your company to maintain a competitive safety rating.

FULL COVERAGE SAFETY NETTING



Strong Man provides tested and proven safety netting for complete fall protection coverage. In addition to our expertise in safety netting, we partner with a network of affiliates who fabricate, supply, and distribute perimeter system hardware that integrate seamlessly with our Personnel Netting.

ENGINEERING



When supported by a framework of steel cable including structural outriggers, multiple PSN panels are adjoined at staggered connection points to form a continuous line of protection, encircling the structure.

As construction progresses, the PSN can be easily jumped from floor to floor.

Swivel brackets can allow for the poles and nets to swing up and anchor safely against the building during high wind conditions or when construction is dormant, securing the work zone.

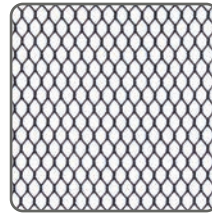
Using state-of-the-art design programs, our engineering department provides detailed drawings and instructions for implementing and maintaining your custom safety system.



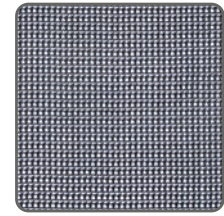
PSNHD BK (2 1/2" Mesh)



PSNBK FR (3 1/2" Mesh)



DNR25BK FR (1/4" Mesh)



WS70BK FR

Most netting is Fire Retardant, conforming to NFPA-701. Many materials are also available in different colors to suit your project. Ask a Strong Man netting expert for more product specs and details.

TRUSTED SAFETY

Strong Man PSNs feature a woven 1/2" border rope (rated to over 5,000 lb) and corner attachment loops for easy orientation during installation.

Our PSN120 and PSN120HD netting is made from #120 High Tenacity Nylon and is tested to dynamic loads of at least 17,500 lb.

SUPERIOR QUALITY



Dynamic PSN testing.



Dual layer protection to contain fine particles.

- Overpasses
- Bridges
- Elevator Shafts
- High-rises
- Highways
- Renovations
- Beneath Skylights
- New Builds

TESTED & PROVEN

Custom designed with safety as a top priority, Strong Man products undergo rigorous testing to ensure materials meet or exceed industry standards.





READY TO SHIP

Strong Man keeps a variety of popular sizes in stock, ready to ship with minimal lead time. We also offer custom sizing to precisely fulfill your requirements.



Model Number	Size		Weight		Weight (with Liner)	
	ft	(m)	lb	(kg)	lb	(kg)
PSN1020	10 x 20	(3.0 x 6.1)	31	14	33	15
PSN1520	15 x 20	(4.5 x 6.1)	47	21	50	23
PSN1525	15 x 25	(4.5 x 7.6)	58	26	62	28
PSN1530	15 x 30	(4.5 x 9.1)	70	32	74	34
PSN1540	15 x 40	(4.5 x 12.2)	93	42	99	45
PSN2020	20 x 20	(4.5 x 4.5)	62	28	66	30
PSN2025	20 x 25	(4.5 x 7.6)	77	35	83	38
PSN2030	20 x 30	(4.5 x 9.1)	93	42	99	45
PSN2040	20 x 40	(4.5 x 12.2)	124	56	132	60
PSN2525	25 x 25	(7.6 x 7.6)	97	44	103	47
PSN2550	25 x 50	(4.5 x 15.2)	193	87	206	94
PSN3040	30 x 40	(9.1 x 12.2)	185	84	198	90
PSN1717	17 x 17 x 24	(5.2 x 5.2 x 7.3)	29	13	32	15



Combine PSN with StrongBlock for complete containment.

MORE FROM STRONG MAN



StrongBlock Debris Nets



Residential Safety Nets



Work Platform Netting

COMPLETE SAFETY SYSTEMS

Strong Man Custom Safety Netting Solutions include products designed to keep your site and the surrounding area safe from the unique hazards of a construction environment. Combine PSN with StrongBlock Debris Containment for a complete safety system.

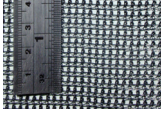
Bring your job site into compliance with OSHA and ANSI-rated safety systems that are tested and proven safe and effective. Contact an Strong Man construction netting expert for more details.





800.950.6999
strongman.com

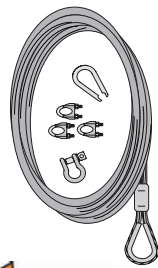
PSN Two Net Installation Between Four Cables



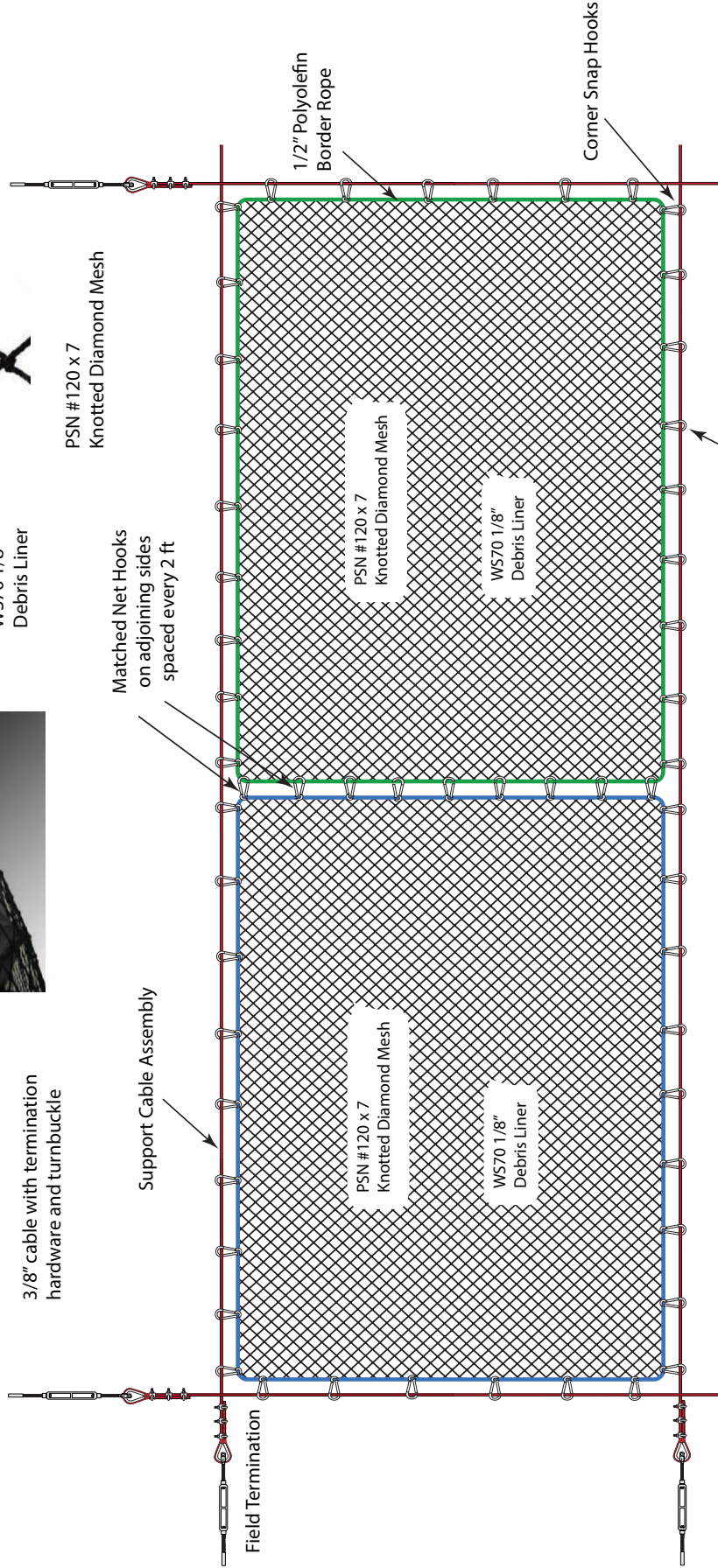
W570 1/8" Debris Liner



PSN #120 x 7 Knotted Diamond Mesh



3/8" cable with termination hardware and turnbuckle



Cable attachment method to be determined by site engineer

Strong Net Skylight Covers

An enhanced level of safety for roof work near skylight or hatch openings.

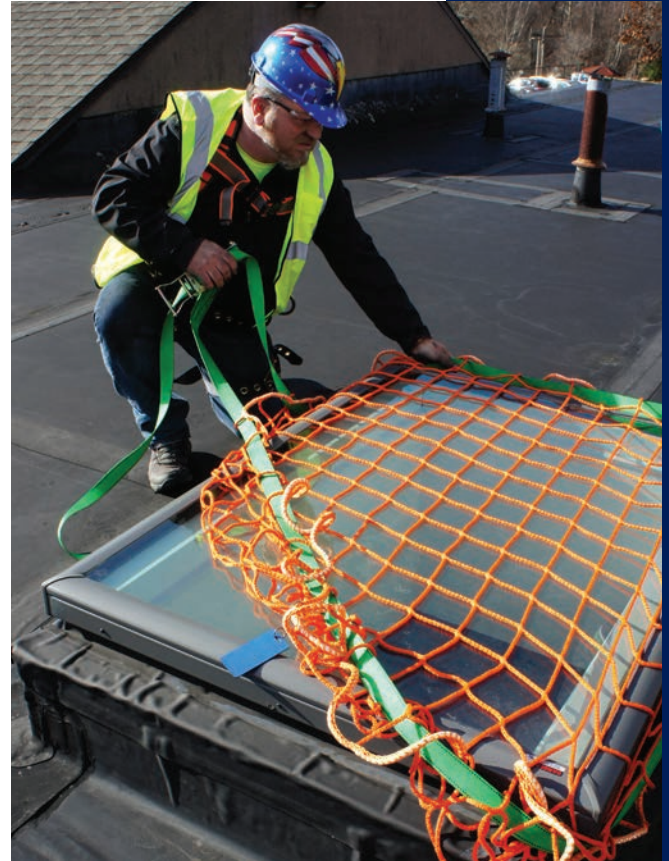


Strong Net Skylight Covers fit onto raised-lip skylights or hatch openings with a minimum 2" vertical lip surface. **Strong Net Skylight Covers** are designed to contain a load of 1,000 lb.

Manufactured using Safety Orange 1-1/2" High Tenacity Polypropylene (HTPP) with a 4" square mesh, each **Skylight Cover** is reinforced with sewn rope borders.

Strong Net Skylight Covers come with a 1-1/2" green web strap with an attached ratchet for securing tightly around the skylight.

- Provides fall protection safety
- Compacts and stores quickly
- No hand tools required
- Easy to set up



In-stock sizes available:

Maximum skylight size* for each stock net size:

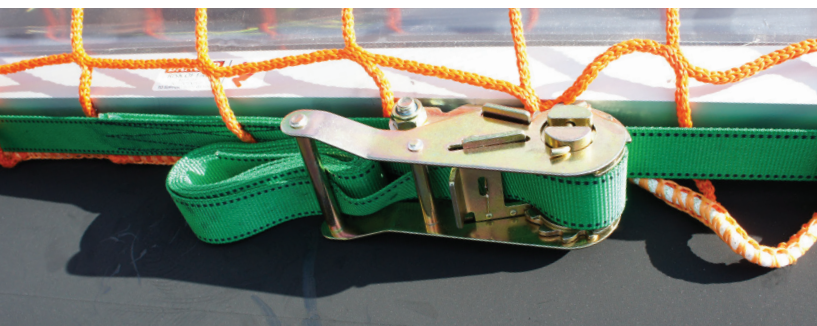
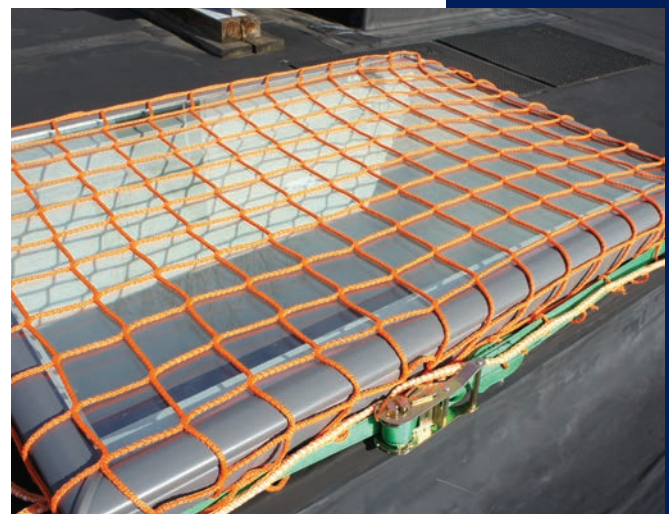
Net: 7' x 7' Max Size: 68" x 68"

Net: 7' x 10' Max Size: 68" x 104"

Net: 10' x 10' Max Size: 104" x 104"

*Size measured from outside of curb on both sides.

Custom sizes available upon request.



STRONG MAN SAFETY PRODUCTS
800.950.6999 • STRONGMAN.COM



Copyright © SMSP
All Rights Reserved
MH22-04.1

Instructions

Skylight Net Measuring



The safety net cover is designed for raised lip skylights or hatch openings that have a minimum 2 inch vertical lip surface suitable for securing a ratchet strap.

The safety net will be draped over the skylight or hatch opening covering all sides to the roof level.

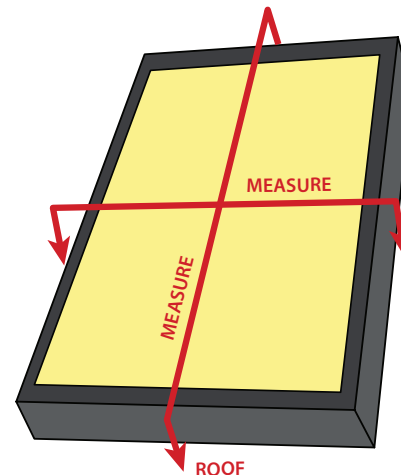
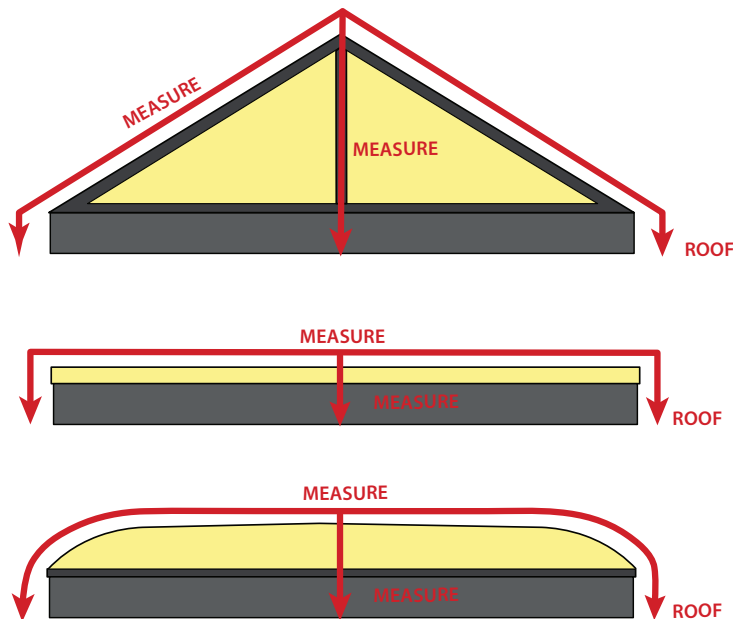
Measuring the skylight / hatch for a safety net cover

It is important to measure each width and length axis as a continuous measurement from roof over skylight to roof.

Use a tape measure or a rope cord that can later be measured.

1. **Width Measurement:** Starting from the roof level, measure up and over the skylight to the roof level on the opposite side.
2. **Length Measurement:** Starting from the roof level, measure up and over the skylight to the roof level on the opposite side.
3. If the skylight is of irregular shape, multiple measurements may be necessary. Round skylights are also width and length.
4. Make a simple line sketch of the skylight/hatch opening and clearly indicate each complete measurement from roof over skylight to roof.

Supplies & Tools



Each axis is a continuous measurement from roof over skylight to roof.

Strong Block

Heavy Duty Debris Containment



Stay one step ahead of potential disasters, ensuring a safe worksite for workers, pedestrians, and property.

Protect your worksite and workers from potential danger by using **Strong Block** panels. These panels act as a secure shield, wrapping directly around debris sources to prevent hazardous objects from falling or flying.

- Contain up to 10,000 lbs
- OSHA & ANSI Compliant
- Custom Configured
- Dynamically Tested



Dual-Layer Construction

Strong Block uses two net layers combined in a stacked configuration and joined using a bordering technique that provides maximum strength. The dual-layer net design of **Strong Block** can contain up to 10,000 pounds of worksite debris from steel beams to fine particles. In addition, grommeted borders offer easy attachment points.



Strong Block is available in three tested strength ratings for optimal performance for your application. In addition, each includes a choice of liner for either coarse or fine particle containment.

STRONG BLOCK



- 2,000 pound capacity
- M1250 High Tenacity Polypropylene knotless netting
- For containment of lumber tools and light concrete spalling

STRONG BLOCK



- 5,000 pound capacity
- N820 High Tenacity Polypropylene knotless netting
- For containment of heavy concrete and steel debris
- Optimized for vertical containment

STRONG BLOCK

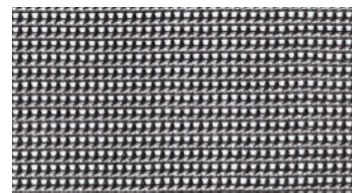


- 10,000 pound capacity
- N820 High Tenacity Polypropylene knotless netting
- For containment of heavy concrete and steel debris
- Optimized for horizontal containment

Liner choices for fine debris containment:

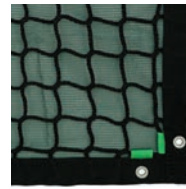
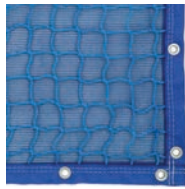
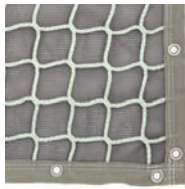


1/4" Mesh



1/8" Mesh





Strong Block Debris Containment is available in different colors. Ask an Strong Man netting expert for more product specs and details.

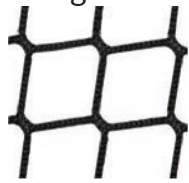
Strong Block panels are designed to wrap a structure or be hung vertically or horizontally depending on the source and type of debris to be contained.

Interconnected panels can span a wide area, utilizing many support points to maximize strength and protection.

Strong Block is reusable with proper inspection, maintenance, and project application analysis and approval.

Industrial Grade Materials

High Tenacity Polypropylene (HTPP) knotless netting maintains a higher strength than equivalent knotted netting without the stretch of Nylon.



N820BK (2 1/2" Mesh)



M1250 (2" Mesh)



Dual layer protection to contain fine particles.

- Overpasses
- Elevator Shafts
- Highways
- Facades
- Bridges
- High-rises
- Renovations
- New Builds



Hardware Options

Galvanized 7 x19 cable forms a frame onto which **Strong Block** panels attach. Attachment and hardware options will differ depending on your application. Work with a netting expert to determine the best hardware to suit your needs.



Turnbuckle



1/4 inch Wire Cable

80mm Snap Hook

Cable Clip



Combine RocBloc with InCord PSN for complete containment.

Complete Safety Systems

Strong Man Custom Safety Netting Solutions include products designed to keep your site and the surrounding area safe from the unique hazards of a construction environment. Combine PSN with **Strong Block Debris Containment** for a complete safety system.

Dynamically Tested

Custom designed with safety as a top priority, **Strong Man** products undergo rigorous testing to ensure materials meet or exceed industry standards.

MORE FROM STRONG MAN



Personnel Safety Nets



Residential Safety Nets



Work Platform Netting



800.950.6999
sales@strongman.com
strongman.com

