

PRODUCT CATALOG

SAFETY SERVICE SOLUTIONS



A NATIONAL COMPANY
SERVING THE COMMERCIAL, INDUSTRIAL,
CIVIL AND MARITIME CONSTRUCTION
INDUSTRIES THROUGH DISTRIBUTION

800.950.6999 - SALES@STRONGMAN.COM

STRONGMAN.COM

NEW JERSEY-FLORIDA-ILLINOIS-TEXAS-WASHINGTON-CALIFORNIA



SAFETY. SERVICE. SOLUTIONS.

STRONG MAN has been supplying the commercial and industrial construction market since 1974. With a commitment to selling via distribution, **STRONG MAN** quickly developed a reputation for offering innovative debris containment and enclosure products, custom-made solutions, a large on-hand inventory, and unrivaled service. **STRONG MAN** provides valuable product knowledge, years of industry experience, and solutions for every application, regardless of the size or scope of your job. We pride ourselves on our customer experience and work tirelessly to fulfill our commitments to our clients, build strong relationships, offer superior customer service, and stand by our products.



SAFETY.

We take great satisfaction knowing that our products provide a safer work environment for construction professionals and pedestrians alike. We are committed to providing the best safety and enclosure products in the construction space across the entire United States.

SERVICE.

We take pride in providing the fastest order processing and shipping in the industry. Most orders placed before 2 PM EST are shipped the same day. With coast to coast locations, this rapid shipping dramatically reduces – and sometimes even eliminates – costly worker downtime and allows contractors to control costs. We are able to maintain this level of service because of our industry-leading expertise and our large inventory, which is unparalleled in the tarp and debris netting market.

SOLUTIONS.

From our large on-hand inventory to our industry leading expertise, **STRONG MAN** is committed to providing common-sense, workable solutions for the modern construction job-site. We are proud to offer netting and enclosure products from our stock items located accross the country or to develop a custom, job-specific solution. And remember, we work *with* our distributors *not around them*.



SBN-22 Safety Debris Netting

Premium Safety Netting



SBN-22 Safety-Debris Netting

Premium Safety Netting

SBN-22 Safety-Debris Netting is a 1/4" knitted mesh material commonly used for guardrail debris protection, scaffolding enclosures or visual safety debris net barriers. Safety Debris Netting is made from high density polyethylene (HDPE) with UV inhibitors for maximum life expectancy. Fire retardant tests performed by a 3rd party independent lab.

Picture Description:
Fire Retardant Safety Debris Netting
10'6 x 150' Orange Fire Retardant



Picture Description:
Fire Retardant Safety Debris Netting
8'6" x 150' Gray Fire Retardant

- High density polyethylene (HDPE)
- 1/4" Hole Openings
- Reinforced hems
- Protects workers, pedestrians, adjacent properties from job-site debris
- Temporary guardrail
- Creates a visual barrier for safety
- Will not unravel when cut
- Remains flexible in all-weather climates
- UV treated
- Tear/rip resistant mesh netting
- Hole openings allows air to pass through
- Fire Retardant: NFPA 701 Method II & Boston Fire Marshall BFD 1X-1

Specifications

General Information & Packaging

All rolls are tightly packaged into clear poly bags with branded labels for easy shipping and handling. Safety Debris Netting is tested and approved to meet the standards of today's industrial and construction industry.



Distribution Centers:
New Jersey
Florida
Illinois
Texas
Washington State
California



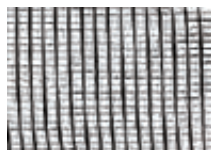
Product Features / Key Benefits

SBN22's 1/4" open knitted mesh design allows for air flow, yet still provides containment of small and mid-sized debris. Safety Debris Netting includes reinforced hems for attaching zip ties to make an easy, safe and secure installation. UV treated to avoid color fading.

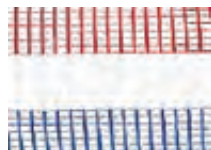
SBN-22	Roll Size	Color	Fire Retardant	PKG
Safety Debris Netting	4' x 150'	Orange, Blue, Black, Red, Yellow, Green, Gray, RWB	FR	1/bag, 50/pallet
Safety Debris Netting	5'6" x 150'	Orange, Blue	FR	1/bag, 45/pallet
Safety Debris Netting	8'6" x 150'	Orange, Blue, Black, Green, Gray, White	FR	1/bag, 20/pallet
Safety Debris Netting	10'6" x 150'	Orange, Blue	FR	1/bag, 20/pallet
Safety Debris Netting	12' x 150'	Orange, Blue	FR	1/bag, 20/pallet
Safety Debris Netting	15' x 150'	Orange, Blue	FR	1/bag, 20/pallet
Safety Debris Netting	Custom Size	Any Color	FR	1/bag, 150 Roll Min



Gray



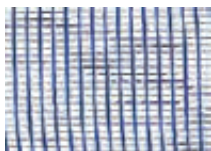
Black



Red White & Blue



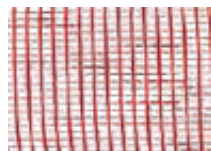
Green



Blue



Orange



Red



Yellow

SBN-324 Debris Netting

Vertical and Horizontal Enclosure



SBN-324 FR Debris Netting

Vertical and Horizontal Enclosure

SBN-324 Debris Netting is a 1/16" tightly knitted mesh commonly used for debris containment on today's modern job-sites. Durable and tear resistant, SBN-324 can be used for perimeter protection, scaffold enclosures, debris containment, guardrail, shade cloth/visual barrier and wind screen. SBN-324 is made from high density polyethylene (HDPE) with added UV for maximum life expectancy.

Picture Description:
Fire Retardant Debris Netting
8'6" x 150' Green



Picture Description:
Fire Retardant Debris
Netting 10' x 150' Black

- High density polyethylene (HDPE)
- 1/16" Hole Openings
- Reinforced buttonholes in both hems
- Protect workers, pedestrians & adjacent properties from job-site debris
- Creates a protective scaffolding enclosure
- Fire Retardant: NFPA 701 Test Method II & Boston Fire Marshal BFD 1X-1
- Scaffold netting, guardrail netting, floor-to-ceiling
- Tear resistant & will not unravel when cut
- Allows air to pass through
- Remains flexible in cold weather
- Shade cloth, visual & wind barrier

Specifications

General Information & Packaging

All netting rolls are tightly packaged into clear poly bags with branded labels for easy shipping and handling. All Fire Rated (FR) Debris Netting is Tested and Approved NFPA 701 Boston Fire Marshal BFD 1X-1.



Distribution Centers:

- New Jersey**
- Florida**
- Illinois**
- Texas**
- Washington State**
- California**



Product Features / Key Benefits

SBN-324 polyethylene netting provides containment of small and chunk debris and is highly tear resistant. Each roll of netting includes finished hems with reinforced buttonholes allowing for an easy, safe and secure installation. Hole openings are approximately 1/16". Custom Pantone Matched colors available for special order.

SBN-324	Roll Size	Color	Fire Retardant	PKG
Debris Netting	4' x 150'	Black, Blue	FR	1/bag, 25/pallet
Debris Netting	8'6 x 150'	Black, White, Green, Blue	FR	1/bag, 15/pallet
Debris Netting	10' x 150'	Black, White, Green, Tan, Orange, Red, Blue	FR	1/bag, 12/pallet
Debris Netting	12' x 150'	Black	FR	1/bag, 12/pallet
Debris Netting	15' x 150'	Black	FR	1/bag, 12/pallet
Debris Netting	10' x 300'	Black	FR	1/bag, No Pallet
Debris Netting	12' x 300'	Black	FR	1/bag, No Pallet
Debris Netting	20' x 200'	Black	FR	1/bag, 6/pallet

Black

Blue

Green

Orange

White

Tan

Red



SBN-1460 Debris Netting & SBN-427 PVC Coated Debris Netting

SBN-1460 Debris Netting

Vertical and Horizontal Applications



Picture Description:
SBN-1460 10' x 300'

SBN-1460 Debris Netting is a 1/32" tightly knitted mesh commonly used for debris containment on today's modern job-sites. Durable and tear resistant, SBN-1460 can be used for perimeter protection, scaffold enclosures, debris containment, guardrail, shade cloth/visual barrier and wind screen. SBN-1460 is made from high density polyethylene (HDPE) with added UV for maximum life expectancy. The small hole openings and dense fabric make this ideal for use by fabricators.



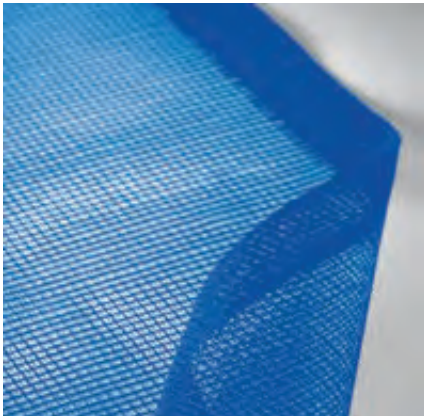
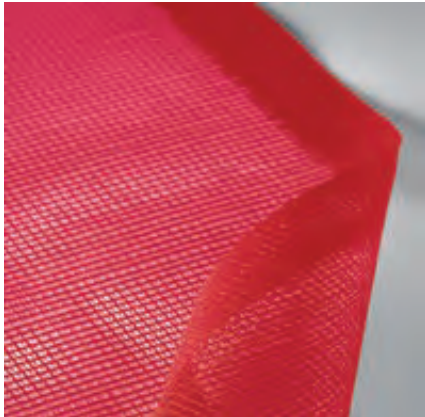
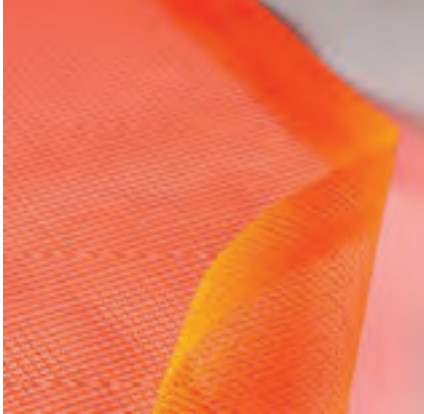
- High density polyethylene (HDPE)
- 1/32" Hole Openings
- Non-Fire Retardant
- Reinforced buttonholes in both hems
- Protect workers, pedestrians & adjacent properties from job-site debris
- Scaffold netting, guardrail netting, floor-to-ceiling
- Tear resistant & will not unravel when cut
- Allows air to pass through
- Remains flexible in cold weather

Specifications

Dimensions. Ratings. Part Information

All netting rolls are tightly packaged into clear poly bags with branded labels for easy shipping and handling. Non-Fire Retardant debris netting.

SBN-1460 Debris Netting & SBN-427 PVC Coated Debris Netting



SBN-427 PVC Coated FR Debris Netting

Premium Debris Netting

SBN-427 Safety-Debris Netting is a 5/32" knitted mesh material commonly used for guardrail debris protection, scaffolding enclosures or visual safety debris net barriers. SBN-427 is made a PVC coated with a base scrim of polyester with UV inhibitors for maximum life expectancy. The strong base fabric and strong PVC coating render this a high-performance, durable product. Fire retardant tests performed by a 3rd party independent lab.

- PVC Coated Polyester
- 5/32" Hole Openings
- Reinforced hems
- Protects workers, pedestrians, adjacent properties from job-site debris
- Temporary guardrail
- Creates a visual barrier for safety
- Will not unravel when cut
- Remains flexible in all-weather climates
- UV treated
- Tear/rip resistant mesh netting
- Hole openings allows air to pass through
- Fire Retardant: NFPA 701 Method II & Boston Fire Marshall BFD 1X-1
- Made in the USA

Specifications

Dimensions. Ratings. Part Information

All rolls are tightly packaged into clear poly bags with branded labels for easy shipping and handling. Safety Debris Netting is tested and approved to meet the standards of today's industrial and construction industry.



Distribution Centers:

- New Jersey
- Florida
- Illinois
- Texas
- Washington State
- California



SBN-1460



SBN-427 Orange

Product Features / Key Benefits

SBN-1460 polyethylene netting provides containment of small and moderate debris and is highly tear resistant. Each roll of netting includes finished hems with reinforced buttonholes for allowing for an easy, safe and secure installation. Hole openings are approximately 1/32".

SBN-427 5/32" open knitted mesh design allows for air flow, yet still provides containment of small and mid-sized debris. Safety Debris Netting includes reinforced hems for attaching zip ties to make an easy, safe and secure installation. UV treated to avoid color fading.

Item #	Description	Size	Color	FR/NFR	PKG
SBN1460BLK10	Debris Netting	10' x 300'	Black	NFR	1 roll per pe bag
SBN1460BLK12	Debris Netting	12' x 300'	Black	NFR	1 roll per pe bag

Item #	Description	Size	Color	FR/NFR	PKG
SBN427ORG4-FR	Safety Debris Netting	4' x 150'	Orange	FR	1/bag, 25/pallet
SBN427ORG56-FR	Safety Debris Netting	5'6" x 150'	Orange	FR	1/bag, 25/pallet
SBN427RED56-FR	Safety Debris Netting	4' x 150'	Red	FR	1/bag, 25/pallet
SBN427BLUE4-FR	Safety Debris Netting	4' x 150'	Blue	FR	1/bag, 25/pallet
SBN427BLUE56-FR	Safety Debris Netting	5'6" x 150'	Blue	FR	1/bag, 25/pallet

Privacy Fence/Screen



Privacy/Fence Screen

Privacy Screen Mesh is a high density knitted polyethylene that acts as a visual barrier around your job-site. Strong Man Privacy Screen provides an 85% shade factor while allowing some air permeability. Our Privacy Screen does not shrink, and is UV treated for maximum life expectancy.

Picture Description:
Privacy Screen Green
Size: 5'8" x 150' w/ Grommets



- Jobsite perimeter fence screen
- UV treated 85% mesh shade cloth
- 5'8", 7'8" & Custom Sizes Available
- Reinforced buttonholes or grommets for fastening
- Tear/rip resistant mesh
- Wind barrier with low air permeability
- Will not unravel when cut
- Remains flexible in cold weather climates
- Provides a visual barrier for privacy
- Provides protection from dust, debris, demolition on job-site
- Sporting and special events fence screen

Specifications

General Information & Packaging

Privacy Screen with buttonholes is rolled in poly bags with product insert.
Privacy Screen with grommets is folded and packaged in a bale & labeled.
Strong Man proudly displays a product insert or label on all our products.



Distribution Centers:

- New Jersey
- Florida
- Illinois
- Texas
- Washington State
- California



Product Features / Key Benefits

Privacy Screen comes in two options: With reinforced buttonholes or grommets. The reinforced buttonholes provide extra strength and are spaced every 2" to 3" inches in both hems. The privacy screen with grommets have a reinforced hem and grommets 18" on center on all 4 sides. Both options allow for easy installation and have excellent durability and strength.

PRIVACY SCREEN WITH REINFORCED BUTTONHOLES

Description	Roll Size	Color	Perimeter Edges	PKG
Privacy Fence Screen	5'8" x 150'	Green, Black, Blue, Red, Tan	Buttonholes	1/bag, 20/pallet
Privacy Fence Screen	7'8" x 150'	Green, Black, Blue, Red	Buttonholes	1/bag, 15/pallet

REINFORCED HEMS WITH GROMMETS

Description	Roll Size	Color	Perimeter Edges	PKG
Privacy Fence Screen	5'8" x 50'	Green, Black, Blue	Webbing & Grommets	1/bag, 5/bale
Privacy Fence Screen	5'8" x 150'	Green, Black	Webbing & Grommets	1/bag, 10/pallet
Privacy Fence Screen	7'8" x 150'	Green, Black	Webbing & Grommets	1/bag, 10/pallet

Black Blue Green Tan Red



Custom Printed Mesh

Printed PVC Mesh, Fence Screen, Murals & Debris Netting



Custom Printed Mesh

Printed PVC Mesh, Fence Screen, Murals & Debris Netting

Custom branding solutions for your job site needs. Our capabilities allow for single color to full color printing for your company name, logo, advertisements, pictures and designs on a wide array of mesh for various applications. Branded debris netting, murals, banners, and privacy screen has never been so easy to obtain! Our PVC Mesh is fire-retardant and is available in a wide variety of sizes with standard heat sealed hems and grommets.

Picture Description:
Red 92" x 150' Privacy Screen



Picture Description:
Fire Rated PVC Debris Netting
Size: 4' x 150' Orange

- Made from high strength reinforced PVC vinyl fabric
- Single Color or full image printing available
- Standard heat sealed hems and grommets
- 8 oz & 9 oz pvc mesh with 35% air permeability
- 13 oz, 100% vinyl banners
- 5 oz pvc coated polyester debris netting
- Unlimited logo & image designs
- UV treated
- Fire Retardant: NFPA 701 Test Method 2
- Renovation murals
- Warnings/danger notices, public service announcements
- Rock concerts, sporting events, construction/ industrial/bridge sites

Specifications

Dimensions. Ratings. Part Information

Stock and custom sizes are available. Screens include a reinforced, heat-sealed perimeter on all sides & grommets spaced 1' apart on all sides. Printed debris netting is available in 4' and 5'6" x 150' options. Printed with state of the art UV Inks. Our printed products are fire-retardant and meets NFPA 701 Method II.



Distribution Centers:
New Jersey
Florida
Illinois
Texas
Washington State
California



Product Features / Key Benefits

Whether it's for a job-site, athletic field or special event, our high-quality printed products will be sure to enhance the appearance of any site. From simple, single-color logos to high resolution, full color graphic imagery. Our state of the art equipment ensure you receive the highest quality finished product. We will help guide you through process, verify your artwork and deliver your material on time within your budget.

Description/Item #	Material	Density	Fire Retardant	SKU
PrintedMesh	80% PVC Vinyl	8 or 9 oz	FR	PrintedMesh
PrintedBanner	Vinyl Banner	13 oz	FR	PrintedMesh
PrintedNetting	PVC Coated Polyester	5 oz	FR	PrintedMesh



Super FR Tarps Construction Tarps



Super FR Tarps

Fire Retardant Construction Tarp

Super FR Tarps are a 15 mil, 14x14 weave, general-purpose, fire retardant enclosure that provides superior weather protection. Standard features for the Super FR Tarp include 4" reinforced hems, D-Rings and grommets around the perimeter and strengthened corners. The center of the tarp has an internal seam with grommets that are to be used as an extra tie-off point that reduces flapping caused by wind.

Picture Description:
Fire Retardant Super Tarp



- Fire-Retardant: Meets NFPA 701 Method II & Boston Fire Marshal Test BFD IX-1
- High density white woven polyethylene (HDPE)
- Super strong 14x14 weave, 15 mil thickness
- 4" reinforced hem and corners with D-Rings & webbing added for extra strength
- Rust-proof grommets added around perimeter & on internal seams
- Polypropylene rope in hem
- Rip/tear/puncture-resistant fabric
- Easy to install, secure & remove
- Construction or scaffold tarp
- Abatement, demolition & restoration tarp
- Debris and dust containment
- Temporary heat enclosure/barrier
- Suitable for moderate to high wind conditions

Specifications

Dimensions. Ratings. Part Information

Super FR Tarps are tightly folded and packaged in cardboard boxes with size, weight, item #, COO information clearly labeled on the box for easy shipping and handling.



Distribution Centers:

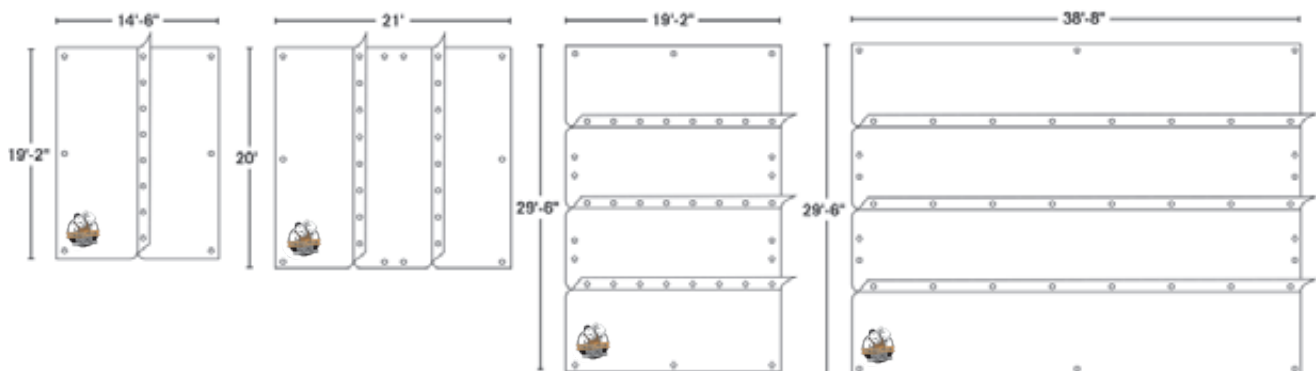
- New Jersey**
- Florida**
- Illinois**
- Texas**
- Washington State**
- California**



Product Features / Key Benefits

The **Super FR Tarp's** advanced fabrication and superior design makes these 15 mil tarps a must have on every job-site. Superior fabrication ensures that d-rings and grommets will line up on like-sized tarps making installation fast & easy. The Super FR Tarp's base material is a super strong 14x14 polyethylene weave that is rip and tear resistant. A superior weather barrier against snow, sleet, rain and wind.

Description/Item #	Size	Mil	Internal Seams	Grommets/ D-Rings Per Tarp	Fire Retardant	Qty/Carton
SUPER1520	15' x 20'	15	1	12-G/20-D	FR	3
SUPER2021	20' x 21'(FS)	15	2	20-G/24-D	FR	2
SUPER2030	20' x 30'	15	3	28-G/28-D	FR	2
SUPER3040	30' x 40'	15	3	46-G/40-D	FR	1



Heavy-Duty FR Tarps

Construction Tarps



Specifications

Dimensions. Ratings. Part Information

Heavy-Duty FR Tarps are tightly folded and packaged in cardboard boxes with size, weight, item #, COO information clearly labeled on the box for easy shipping and handling.

Heavy-Duty FR Tarps

Fire Retardant Construction Tarp

Heavy-Duty FR Tarps are a 10 Mil, 10x10 polyethylene weave, general purpose tarp that provides unmatched protection against wind, rain, snow and sleet. A workhorse on any job-site, standard features for the HD FR Tarp include 2" reinforced hems, double stitched and strengthened patched corners and rope in the hem. Superior strength, rust-proof grommets are evenly spaced every 3' around the perimeter and again on internal seams, which are used as an extra tie-off point to reduce flapping caused by wind.

Picture Description:
Fire Retardant HD FR Tarp

- Fire-Retardant: Meets NFPA 701 Method II & Boston Fire Marshal Test BFD IX-1
- High density white woven polyethylene (HDPE)
- Durable & strong 10x10 weave, 10 mil thickness
- 2" Reinforced hem, sewn corner patches and border rope added for superior strength
- Rust-proof grommets added every 3' around perimeter & on internal seams
- Polypropylene rope in hem
- Rip/puncture-resistant fabric
- Easy to install, secure & remove
- Construction or scaffold tarp
- Abatement, demolition & restoration tarp
- Debris and dust containment
- Temporary heat enclosure/barrier
- Suitable for moderate wind conditions



Distribution Centers:

- New Jersey**
- Florida**
- Illinois**
- Texas**
- Washington State**
- California**

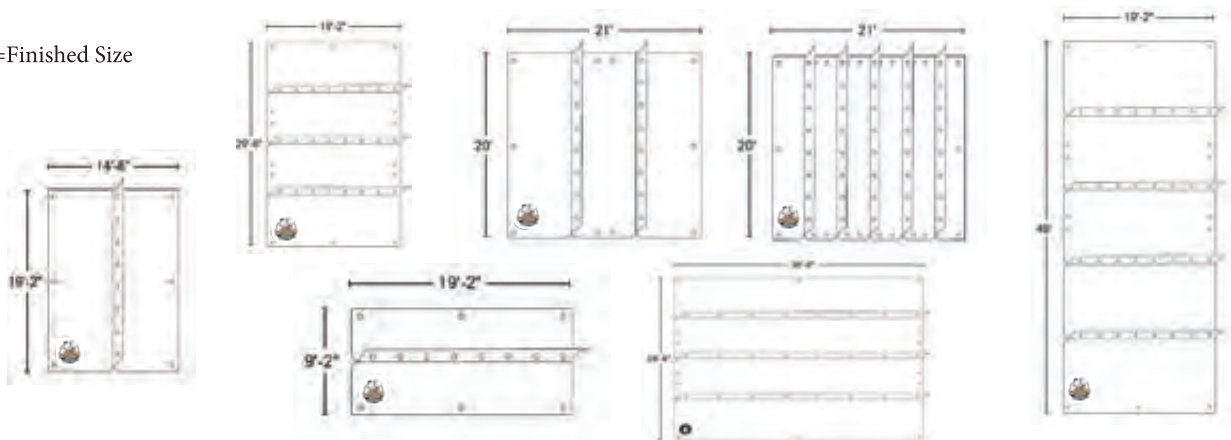


Product Features / Key Benefits

The **Heavy-Duty FR Tarp's** advanced fabrication and superior design makes these 10 mil tarps a must have on every job-site. Premium and consistent fabrication ensures that grommets will line up on like-sized tarps making installation fast & easy. The Heavy-Duty FR Tarp's base material is a durable and strong 10x10 polyethylene weave that is rip and puncture resistant. A superior weather barrier against snow, sleet, rain and wind.

Description/Item #	Size	Mil	Internal Seams	Grommets Per Tarp	Fire Retardant	Qty/Carton
HD1020	10' x 20'	10	1	28	FR	10
HD1520	15' x 20'	10	1	32	FR	5
HD2021	20' x 21' (FS)	10	2	44	FR	4
HD2021-5	20' x 21'-5 (FS)	10	5	60	FR	4
HD2030-3	20' x 30'	10	3	56	FR	2
HD2050-4	20' x 50'	10	4	60	FR	2
HD3040-3	30' x 40'	10	3	86	FR	1

FS=Finished Size



Econo FR Tarp

Construction Tarps



Picture Description: Fire Retardant Econo Tarp

Econo FR Tarps

Fire Retardant Construction Tarp

Econo FR tarps are a 6 Mil, 7x7 polyethylene weave, general purpose tarp that provides excellent weather protection. Ideal for lower elevations and wind conditions, standard features for the Econo FR Tarp include 2" reinforced hems, 23 MM rust-proof grommets around the perimeter and corners. Each corner has a plastic reinforcing guard for added strength. The center of the tarp has an internal seam(s) with grommets that are to be used as an extra tie-off point that reduces flapping caused by wind.



- Fire-Retardant: Meets NFPA 701 Method II & Boston Fire Marshal Test BFD IX-1
- High density white woven polyethylene (HDPE)
- Super strong 7x7 weave, 6 mil thickness
- 2" reinforced hem and corners with grommets & a plastic guard added for extra strength
- Rust-proof grommets added every 3' around perimeter & on internal seams
- Rip/puncture-resistant fabric
- Easy to install, secure & remove
- Construction or scaffold tarp
- Abatement, demolition & restoration tarp
- Debris and dust containment
- Temporary heat enclosure/barrier
- Suitable for low elevations & wind conditions



Specifications

Dimensions. Ratings. Part Information

Econo FR Tarps are tightly folded and packaged in cardboard boxes with size, weight, item #, COO information clearly labeled on the box for easy shipping and handling.



Distribution Centers:

- New Jersey
- Florida
- Illinois
- Texas
- Washington State
- California

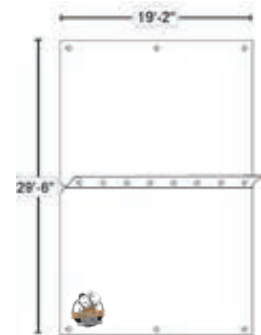
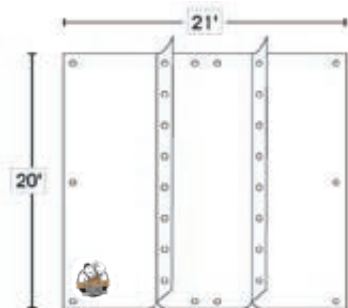
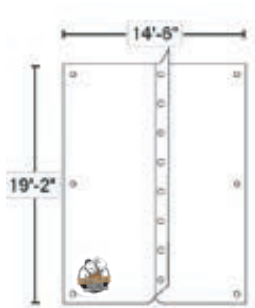


Product Features / Key Benefits

The **Econo FR Tarp's** advanced fabrication and superior design makes these 6 mil tarps ideal for lower floors of new construction or renovation projects. Temporary weather barriers that keep the heat in and the weather out are essential as steel comes out of the ground. Superior fabrication ensures that grommets will line up on like-sized tarps making installation fast & easy. The base material is a super durable 7x7 polyethylene weave that is tear and puncture resistant. An excellent weather barrier against snow, sleet, rain and wind.

Description/Item #	Size	Mil	Internal Seams	Grommets Per Tarp	Fire Retardant	Qty/Carton
Econo1520	15' x 20'	6	1	32	FR	5
Econo2021	20' x 21' (FS)	6	2	44	FR	4
Econo2030	20' x 30'	6	1	40	FR	2

FS = Finished Size



The Mighty FR Tarp

Construction Tarp



Picture Description:
Fire Rated Mighty Tarp



Specifications

Dimensions. Ratings. Part Information

The Mighty FR Tarps are tightly folded and packaged in either a pe bale or cartons with size, weight, item #, COO information clearly labeled on the box for easy shipping and handling.

The Mighty FR Tarp

Fire Retardant Construction Tarp

The Mighty FR Tarp is a 20 Mil, Coated PVC, 18 oz/yd (610 gsm), construction tarp that is designed for extreme weather and winter conditions.

Ideal for the upper floors/elevations where wind conditions are severe, standard features for the Mighty FR Tarp include 6" reinforced hem with 4 rows of stitching & reinforced corners. 2" D-Rings around perimeter and rust-proof brass grommets added every 3 around perimeter and on internal seams. Rope border in hem. The center of the tarp has an internal seam(s) with grommets that are to be used as an extra tie-off point that reduces flapping caused by wind.

When conditions are at there worst, The Mighty Tarp is the solution.

- Fire-Retardant: Meets NFPA 701 Method II & Boston Fire Marshal Test BFD IX-1
- 18 Oz/yd (610 gsm) Coated PVC
- Super strong 18x11 weave, 20 mil thickness
- 6" reinforced hem and reinforced corners withgrommets
- Rust-proof brass grommets added around perimeter and on internal seams.
- Polypropylene rope in hem
- Rip/puncture/tear-resistant fabric
- Easy to install, secure & remove
- Construction or scaffold tarp
- Debris and dust containment
- Temporary heat enclosure/barrier
- Designed for severe wind and weather conditions. Suitable for use in high elevations and upper floors of construction projects



Distribution Centers:

- New Jersey**
- Florida**
- Illinois**
- Texas**
- Washington State**
- California**

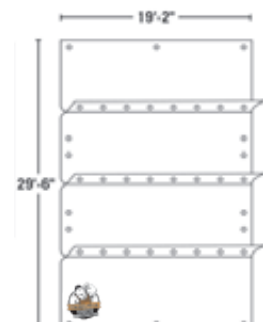
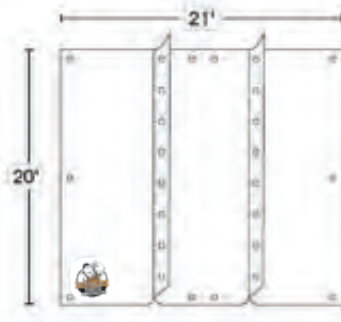


Product Features / Key Benefits

The Mighty FR Tarp's advanced fabrication and superior design makes these 20 mil tarps ideal for the upper floors/elevations of high-rise projects where wind conditions are severe. Superior building enclosures that keep the heat in and the weather out are essential as steel reaches high elevations. Expert fabrication ensures that grommets will lineup on like-sized tarps making installation fast & easy. The base material is a strong & durable 18 oz PVC that is tear, rip and puncture resistant. Extreme conditions such as wind, snow, sleet, and rain require a tarp designed to last. The Mighty FR Tarp is the solution.

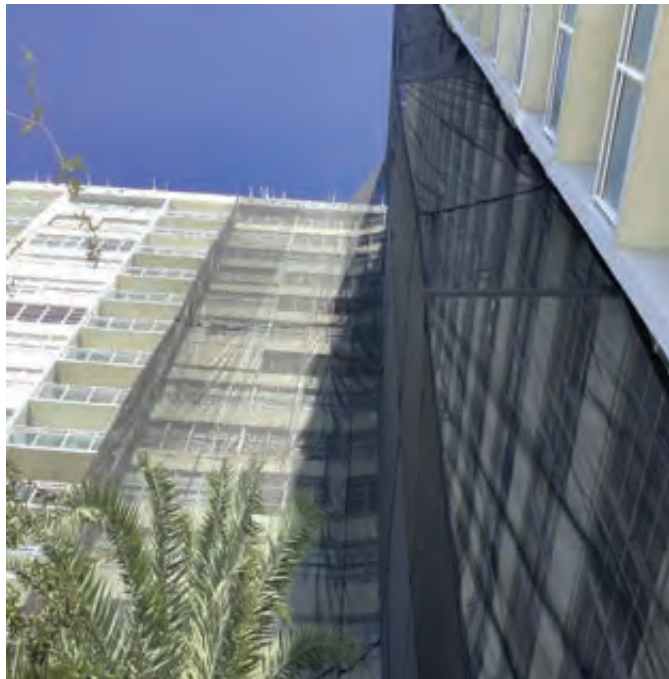
Description/Item #	Size	Mil	Internal Seams	Grommets/ D-Rings Per Tarp	Fire Retardant	Qty/Carton
MT1520	15' x 20'	20	1	12-G/20-D	FR	2
MT2021	20' x 21' (FS)	20	2	20-G/24-D	FR	1
MT2030	20' x 30'	20	3	28-G/28-D	FR	1

FS = Finished Size



Mesh PE Debris Tarps

Fire Retardant



Mesh PE Tarps

Fire Retardant

Mesh PE Debris Tarps are made from a 1/16" knitted polyethylene debris netting fabricated with folded and reinforced hemmed edges and brass grommets. Mesh tarps can be used to create a building containment system during new construction, exterior & interior restoration, scaffolding usage, spray fireproofing, plastering, stucco and drywall installation.

Picture Description:
Black FR Mesh Tarp



- High density polyethylene mesh debris netting
- 1/16" mesh hole openings / 70% Shade
- UV Treated / Tear resistant mesh fabric
- Perimeter edges folded, hemmed and double stitched
- Grommets 3' all edges & internal center seams
- Air Permeable / Remains Flexible
- Fire Retardant: NFPA 701 Test Method II
- Helps contain dust, debris and over-spray
- Construction, scaffolding enclosure
- Containment tarp/Exterior renovation
- Construction, scaffolding, industrial, bridge applications

Specifications

Dimensions. Ratings. Part Information

Mesh PE Debris Tarps come in a durable packed carton for easy transportation and storage. Each carton will be clearly labeled with dimensions, color and size.



Distribution Centers:

- New Jersey**
- Florida**
- Illinois**
- Texas**
- Washington State**
- California**



Product Features / Key Benefits

Mesh PE Debris Tarps are air permeable, yet dense enough to provide containment of debris, dust and various other job-site materials. The 20' x 50' Tarp includes a folded and hemmed internal seam located along the middle of the tarp with grommets that provide an additional tie-off point and reduces flapping, and reduced risk of injury from falling debris. Tear and rip resistant, simple to use and easy to install, our Mesh PE Debris Tarps are fire retardant and meet NFPA 701 Method II.

Description/Item #	Tarp Size	Color	Fire Retardant	PKG
MESH2050BLK-FR	20' x 50'	Black	FR	1/ctn, 12/pallet
MESH2030BLK-FR	20' x 30'	Black	FR	1/ctn, 24/pallet
MESH2020BLK-FR	20' x 20'	Black	FR	1/ctn, 24 pallet
MESHGRN2050-FR	20' X 50'	Green	FR	1/ctn, 12/pallet
MESHGRN2030-FR	20' X 30'	Green	FR	1/ctn, 24/pallet
MESHGRN2020-FR	20' x 20'	Green	FR	1/ctn, 24/pallet
MESHWHT2050-FR	20' x 50'	White	FR	1/ctn, 12/pallet
MESHTAN2050-FR	20' x 50'	Tan	FR	1/ctn, 12/pallet

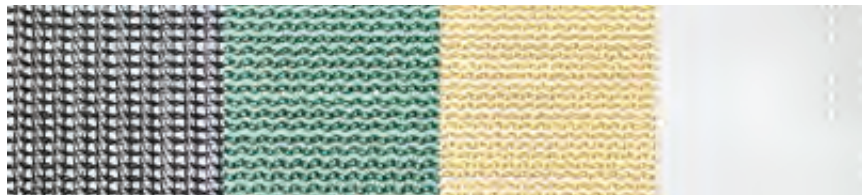
Custom Sizes Available Upon Request

Black

Green

Tan

White



Strong Screen Mesh Tarps

85% Mesh



Strong Screen Mesh Tarps

85% Mesh Screen

Strong Screen Mesh Tarps are fabricated from a 85% woven polypropylene mesh that has reinforced hemmed edges and grommets. Designed to create a temporary building enclosure during construction, plastering, spray fireproofing, plastering, stucco, drywall installation and scaffolding applications.

Picture Description:
85% Mesh PP Screen



- UV treated 85% polypropylene screen
- Perimeter seams are folded, hemmed and double stitched
- Rust-proof grommets spaced every 3 feet on all hems & internal center seams
- Mold & mildew resistant mesh
- Minor air permeability via small hole openings
- Flexible in cold weather; will not crack
- Non-Fire Retardant (NFR)
- Fire Retardant: NFPA 701 Test Method II
- Commercial and industrial construction, scaffolding enclosure, renovation and restoration, spray fireproofing, plastering, and masonry, bridge applications

Specifications

Dimensions. Ratings. Part Information

Strong Screen Mesh Tarps come in a durable packed carton for easy transportation and storage. Each carton/bale will be clearly labeled with dimensions, color and size.



Distribution Centers:

- New Jersey**
- Florida**
- Illinois**
- Texas**
- Washington State**
- California**



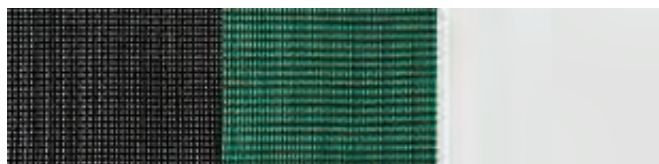
Product Features / Key Benefits

The **Strong Screen Mesh Tarp** helps to contain drifting job-site dust and debris from escaping, while allowing for minimal air permeability via small holes in the fabric. With internal center seams and added grommets down the middle of the tarp, flapping is minimized while containment is maximized. Precision fabrication and superior base fabrics result in a tough tarp that is designed to meet the demands of the modern-day job-site. Strong Screen Mesh Tarps are fire-retardant and meet NFPA70 Method II.

Description/Item #	Tarp Size	Color	Fire Retardant	PKG
SSMT2050BLK	20' x 50'	Black	NFR	1 tarp/bale
SSMT2050DGRN	20' x 50'	Dark Green	NFR	1 tarp/bale
SSMT2050WHT-FR	20' x 50'	White	FR	1 tarp/bale

Custom Sizes Available Upon Request

Black Green White



Accessories



Zinc Plated Steel Snap Hooks
#SH80ZP, #SH100ZP & #SH120ZP
100 pcs/ctn



Bungee Cords
#BC111 - 100 pcs/bag, 10 bags/ctn



Cable/Zip Ties
50 & 120 Lbs - 100 pcs/bag

Strong Shield Containment Tarp

Fire Retardant & Non-Fire Retardant



Picture Description:
Strong Shield Containment Tarp



Specifications

Dimensions. Ratings. Part Information

Strong Shield Tarps are packaged individually in a bale for easy transportation and storage. Each bale will be clearly labeled with dimensions, color and size.

Strong Shield Containment Tarp

Fire Retardant & Non-Fire Retardant

Strong Shield Tarps are premium solid tarps designed for industrial and construction job-sites. Strong Shield base fabric is a woven black, high-density polyethylene scrim that ranges from 12 mil to 20 mil thickness. The tight weave and 2 mil coating provide a durable barrier against extreme weather and job-site conditions. At 301 GSM, the Strong Shield Tarp can act as a weather shield, remediation/environmental containment cover, marine enclosure, or high-rise building tarp. Each Strong Shield tarp is custom fabricated and made to order. Standard features include super-strong reinforced webbing and rust proof grommets around the perimeter. Strong Shield Tarps include internal center seams with added grommets down the middle for added strength and attachment points. Next level strength, durability and protection for the challenges found on modern-day projects.

- Coated woven high-density polyethylene solid fabric
- Coating: 2 mil average each side
- Color: Black, white, blue, silver coatings (subject to availability)
- Weight: 301 GSM
- 12 mil, 14 mil, 16 mil, 20 mil thickness
- Made in the USA
- Seams: Heat sealed
- Reinforced webbing & grommets in corners and around perimeter
- Reinforced webbing & grommets on internal center seams
- Corner patches reinforced for added strength
- Containment overlaps available for joining tarps together
- Flame Retardant available, meets NFPA 701 Test Method 2
- Custom Made To Order!



Distribution Centers:

- New Jersey**
- Florida**
- Illinois**
- Texas**
- Washington State**
- California**



Product Features / Key Benefits

Strong Shield Containment Tarps are air permeable, yet dense enough to provide containment of debris, dust and various other job-site materials. The 20' x 50' Tarp includes a folded and hemmed internal seam located along the middle of the tarp with grommets that provide an additional tie-off point and reduces flapping, and reduced risk of injury from falling debris. Tear and rip resistant, simple to use and easy to install, our Mesh PE Debris Tarps are fire retardant and meet NFPA 701 Method II.

Description/Item #	Size	Mil	Color	Fire Retardant	PKG
SSCT12WHT-FR	Custom	12	Milky White	FR	1/bale
SSCT16WHT-FR	Custom	16	Milky White	FR	1/bale
SSCT20WHT-FR	Custom	20	Milky White	FR	1/bale
Non-Fire Retardant					
SSCT12BW	Custom	12	Black/White	NFR	1/bale
SSCT12SW	Custom	12	Silver/White	NFR	1/bale
SSCT14BW	Custom	14	Black/White	NFR	1/bale
SSCT16BW	Custom	16	Black/White	NFR	1/bale
SSCT16BLU	Custom	16	Blue/White	NFR	1/bale
SSCT20BW	Custom	20	Black/White	NFR	1/bale
SSCT20WW	Custom	20	White/White	NFR	1/bale
SSCT-Roll	12' x 125'	*Color, Mil thickness, FR or NFR based upon availability.			

Coated Airbag Tarp

Silicone Coated Tarp



Picture Description:
Fire Rated Coated Airbag Tarp



Coated Airbag Tarp

Silicone Coated Tarp

Coated Air Bag Tarps are widely used in the industrial construction markets due to their strength, durability, and containment properties. Designed to limit particulate matter from escaping the job-site, Air Bag Tarps are widely utilized for general construction, industrial paint over-spray, coarse blasting, lead abatement and fire proofing over-spray applications. Superior fabrication combined with the great strength of the nylon fabric coated with silicone creates an impermeable barrier on the job-site. Added webbing, grommets, internal seams, and reinforced corners make our tarps easy to install and rugged enough to perform on the harshest job sites.

- High-quality woven 420 denier nylon fabric with a silicone coating
- Mil thickness: 12 mil or available material
- Fabric weight: 6.0 oz/sq yd
- Perimeter edges and internal seams include 1.5" or 2" webbing, double stitching & brass or steel grommets
- Corners are sewn & reinforced for add durability
- Sewn 1' alternating overlap flaps for joining tarps together
- Airbag nylon colors varies, based upon availability
- Flame Retardant (FR), meets FMVSS 302 Test
- Industrial strength containment tarp
- Custom sizes are made to order

Specifications

Dimensions. Ratings. Part Information

Coated Airbag Tarps come in a wide variety of sizes and colors vary slightly. Stock and custom sizes can be fabricated in order to meet the demands of today's modern day job-istes. Packaged individually and labeled, our tarps will ship on either a pallet or in a corrugated bulk cargo box.



Distribution Centers:

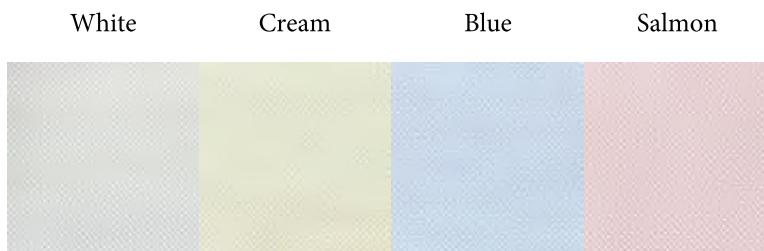
- New Jersey**
- Florida**
- Illinois**
- Texas**
- Washington State**
- California**



Product Features / Key Benefits

Fabricated from premium-grade fabric, our **Coated Air Bag Tarps** are designed to meet SSPC Class 1A requirements. Puncture and tear resistant, these sturdy, long-lasting tarps are meticulously constructed to perform in the toughest conditions.

Description/Item #	Size	Nylon	Color	FR	Coating	PKG
ABT3050	30' x 50'	420 Denier	See Chart	Yes	Silicone	1/bag
ABT4060	40' x 60'	420 Denier	See Chart	Yes	Silicone	1/bag
ABT5050	50' x 50'	420 Denier	See Chart	Yes	Silicone	1/bag
ABT10015	100' x 15'	420 Denier	See Chart	Yes	Silicone	1/bag
ABT20100	20' x 100'	420 Denier	See Chart	Yes	Silicone	1/bag
ABT30100	30' x 100'	420 Denier	See Chart	Yes	Silicone	1/bag
ABT-Custom	Custom Size	420 Denier	See Chart	Yes	Silicone	1/bag



Specialty Tarps

Demo - Drainage - Supreme UV - Snow Tarps



Picture Description: Demo Tarp



Picture Description: Drainage FR Tarp



Picture Description: Supreme UV Tarp

Demo Tarp

Heavy-Duty Debris Removal

The DEMO TARP is a rugged lifting-tarp that provides an efficient and safe way to remove job-site debris during renovation, knock-downs and general construction. The 20 RFL Polyester is resistant to punctures, tears and abrasions. Fabricated with heavy-duty 2" webbing (4) in a criss-cross pattern for maximum strength and eight lifting loops for easy movement and lifting capability.

Drainage FR Tarp

Premium Water-Diverter

The Strong Man Drainage FR Tarp is the go-to tarp to effectively divert water away from your work area and is perfect for construction, industrial maintenance, home renovation, roof work, and much more. Easy to install and made from rip-resistant, high-density woven polyethylene, our Drainage Tarp comes with a specially designed fitting that easily connects to any standard 3/4" garden hose. Super strong HDPE 14x14 weave and fire-retardant to NFPA 701 Method II. Water from leaks, melting snow or broken pipes is no match for the Drainage Tarp as it is safely collected and diverted away so repairs may continue.

Supreme UV Tarp

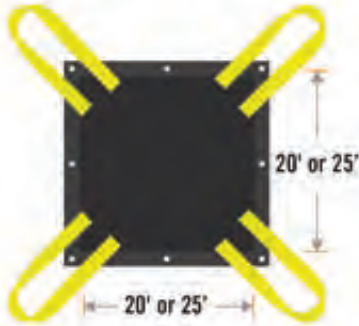
General Purpose NFR Tarp

Strong Man's Supreme UV Tarp is a heavy-duty, all-purpose tarp making it ideal for any job-site. The Supreme UV Tarp is made with black high-density woven polyethylene that is UV treated providing extended life on your job-site. 14x14 weave and 10 mil. Heat and cold resistant, this durable tarp is puncture/tear resistant and is designed to stand up to harsh conditions. The Supreme UV's superior fabrication makes it ideal for remediation, abatement and containment work. From sandblasting to dust containment, for use as a commercial or residential enclosure, the Supreme UV Tarp is up to the task.



Distribution Centers:

- New Jersey**
- Florida**
- Illinois**
- Texas**
- Washington State**
- California**



Picture Description: Snow Removal Tarp

Snow Tarp

Snow Removal Tarp

Construction site snow removal has never been easier thanks to the Strong Man Snow Tarp. Strong Man quality combined with a practical way to remove freshly fallen snow makes this a must have for every job-site. Simply lay your tarp out before the snow falls, yellow webbing always facing down, attach the corners to a crane or lift after the snowfall and lift the snow off of your job-site and watch your productivity and efficiency improve. A practical solution for a common problem. And most importantly, it's safe. Put your shovels away and save hundreds of man hours with the Strong Man Snow Tarp.

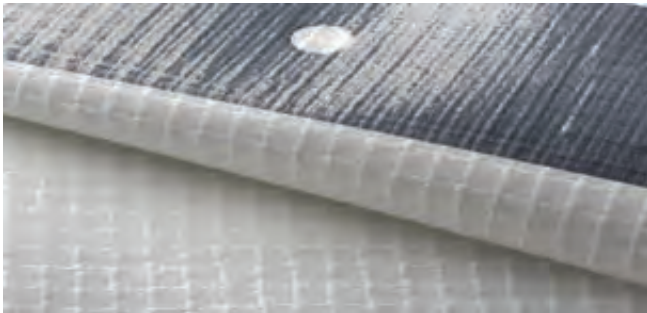
Description/Item #	Style	Size	Color	FR/NFR	PKG
DEMO66	Demo Tarp	6' x 6'	Red/Brown	NFR	1/ctn, 24 ctn/pallet
DEMO88	Demo Tarp	8' x 8'	Red/Brown	NFR	1/ctn, 24 ctn/pallet
DEMO1010	Demo Tarp	10' x 10'	Red/Brown	NFR	1/ctn, 18 ctn/pallet
DEMO1212	Demo Tarp	12' x 12'	Red/Brown	NFR	1/ctn, 12 ctn/pallet
DEMO2020	Demo Tarp	20' x 20'	Red/Brown	NFR	1/ctn, 8 ctn/pallet
DT36	Drainage Tarp	3' x 6'	Milky White	FR	10/ctn, 30 ctn/pallet
DT66	Drainage Tarp	6' x 6'	Milky White	FR	10/ctn, 30 ctn/pallet
DT68	Drainage Tarp	6' x 8'	Milky White	FR	10/ctn, 30 ctn/pallet
DT610	Drainage Tarp	6' x 10'	Milky White	FR	5/ctn, 30 ctn/pallet
DT1010	Drainage Tarp	10' x 10'	Milky White	FR	5/ctn, 24 ctn/pallet
DT1212	Drainage Tarp	12' x 12'	Milky White	FR	5/ctn, 18 ctn/pallet
DT1515	Drainage Tarp	15' x 15'	Milky White	FR	5/ctn, 18 ctn/pallet
SUV1225	Supreme UV Tarp	12' x 25'	Silver/Black	NFR	5/ctn, 16 ctn/pallet
SUV1620	Supreme UV Tarp	16' x 20'	Silver/Black	NFR	4/ctn, 16 ctn/pallet
SUV1230	Supreme UV Tarp	12' x 30'	Silver/Black	NFR	4/ctn, 16 ctn/pallet
SUV2020	Supreme UV Tarp	20' x 20'	Silver/Black	NFR	3/ctn, 16 ctn/pallet
SUV2030	Supreme UV Tarp	20' x 30'	Silver/Black	NFR	2/ctn, 16 ctn/pallet
SUV2040	Supreme UV Tarp	20' x 40'	Silver/Black	NFR	2/ctn, 16 ctn/pallet
SUV3040	Supreme UV Tarp	30' x 40'	Silver/Black	NFR	1/ctn, 16 ctn/pallet
SUV3050	Supreme UV Tarp	30' x 50'	Silver/Black	NFR	1/ctn, 12 ctn/pallet
SUV4060	Supreme UV Tarp	40' x 60'	Silver/Black	NFR	1/bale, 6/pallet
SUV50100	Supreme UV Tarp	50' x 100'	Silver/Black	NFR	1/bale, 3/pallet
SUV100100	Supreme UV Tarp	100' x 100'	Silver/Black	NFR	1/bale, 2/pallet
SNOWTARP	Snow Removal Tarp	20' x 20'	Black	NFR	1/ctn, 16 ctn/pallet
SNOWTARP25	Snow Removal Tarp	25' x 25'	Black	NFR	1 ctn, 10 ctn/pallet

Strong Wrap Scaffold Sheeting

FR Scaffold Sheeting with Reinforced Bands



Picture Description
Fire Retardant Strong Wrap
Size: 13' x 100' FR



Specifications

Dimensions. Ratings. Part Information

All Strong Wrap scaffold sheeting rolls are tightly packaged into clear poly bags with a product insert for easy identification. All Strong Wrap rolls are folded in half for easy shipping and handling.

Strong Wrap Scaffold Sheeting

Scaffold Sheeting with Reinforced Bands

Strong Wrap is a premium grade string reinforced poly sheeting with added bands for additional strength and pre-marked holes which are used as a tie-off point. Reusable, durable and highly tear & puncture resistant. When installed with our BC-111 bungee cords, Strong Wrap will create a weather barrier that allows your project to move forward, regardless of the weather conditions.

- Premium grade string reinforced polyethylene sheeting
- Designed with reinforced eyelet bands for fast installation using BC-111 bungee cords
- Mil thickness: 12 mil Sheeting, 38 mil with reinforced bands
- Added pre-marked holes spaced every 4" inch on reinforced bands
- Temporary weather barrier designed to contain heat
- Highly tear & puncture resistant
- Water, weather & mildew resistant
- Durable, strong & long lasting
- UV treated
- Band Color: Gray
- Flame Retardant: Milky White
- Flame Retardant: NFPA 701 Test Method II



Distribution Centers:

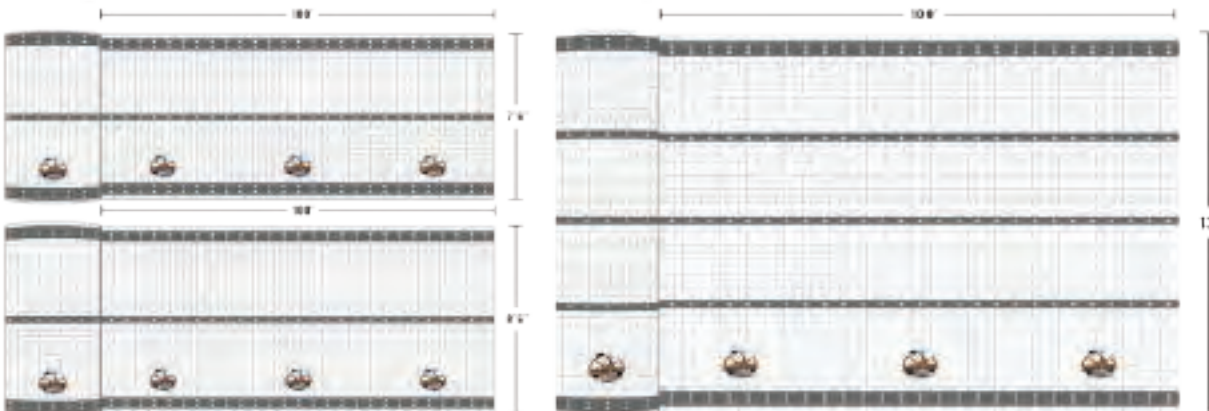
- New Jersey**
- Florida**
- Illinois**
- Texas**
- Washington State**
- California**



Product Features / Key Benefits

Strong Wrap is designed to be easily installed with bungee cords. Push the pointed tip of the bungee through the hole on the band & pull the bungee towards the scaffolding. To secure, use the toggled end to wrap the bungee back to the elastic cord. Saves time, money, labor while creating a tight fit that will help you keep the weather out and the heat in.

Description/Item #	Mil	Size	Flame Retardant	Color	PKG
SW76	12	7'6" x 100'	FR	Milky White	1/bag, 24/pallet
SW86	12	8'6" x 100'	FR	Milky White	1/bag, 24/pallet
SW13	12	13' x 100'	FR	Milky White	1/bag, 20/pallet
SW20	12	20' x 100'	FR	Milky White	1/bag, 20/pallet



Bungee Cords
#BC111
100/bag, 1000/ctn



Strong Lock
Fastener
#StrongLock
500 pcs/ctn



HD Poly
Seam Tape
#HDTAPE
16/ctn

Strong String Reinforced Poly

Square and Diamond Pattern



Strong String Reinforced Poly

Square and Diamond Scrim Options

String reinforced poly sheeting is manufactured to be tear and puncture resistant and highly durable. Reinforced poly can be used in array of applications including enclosures, temporary containment, abatement covers, ground covers and underlayment.



Picture Description:
Square Reinforced Poly
Size: 20' x 100'



- High strength polyethylene film with a tear & puncture resistant reinforced scrim
- Mil thickness: 6 mil, 10 mil
- Scrim: Diamond scrim & Square scrim reinforced options
- Temporary weather barrier, wall, roof & window
- Contains particulate matter on the job-site
- Weather resistant reinforced string poly
- Mold & mildew resistant
- Durable & long lasting
- Non-Fire Retardant: Clear
- Fire Retardant: Milky White
- Fire Retardant (FR) meets NFPA 701 Test Method II

Specifications

Dimensions. Ratings. Part Information

All poly rolls are tightly packaged into clear poly bags with branded labels for easy shipping and handling. All Fire Rated (FR) String Poly is Tested and Approved NFPA 701 and Boston Fire Marshal BFD 1X-1.



Distribution Centers:

- New Jersey**
- Florida**
- Illinois**
- Texas**
- Washington State**
- California**



Product Features / Key Benefits

Strong String Reinforced Poly may be installed vertically or horizontally. Square reinforce sheeting includes bands with eyelets for easy attachment points. Square and Diamond Poly options can be attached using scaffold wind clips, bungees ties, tie wire and Furring strips for fastening directly to a building or structure.

Description/Item #	Mil	Scrim	Size	Flame Retardant	PKG
Square Pattern String Poly					
SPI10FR	6	Square	10' x 100'	FR	1/bag, 42/pallet
SPI20FR	6	Square	20' x 100'	FR	1/bag, 25/pallet
SPI20FR10	10	Square	20' x 100'	FR	1/bag, 9/pallet
SPI40FR	6	Square	40' x 100'	FR	1/bag, 12/pallet
SPI40FR10	10	Square	40' x 100'	FR	1/bag, 12/pallet
SPI20NFR	6	Square	20' x 100'	NFR	1/bag, 25/pallet
SPI20NFR10	10	Square	20' x 100'	NFR	1/bag, 9/pallet
SPI40NFR	6	Square	40' x 100'	NFR	1/bag, 12/pallet
SPI40NFR10	10	Square	40' x 100'	NFR	1/bag, 5/pallet
Diamond Pattern String Poly					
SPD10NFR	6	Diamond	10' x 100'	NFR	1/bag, 40/pallet
SPD20NFR	6	Diamond	20' x 100'	NFR	1/bag, 16/pallet
SPD20NFR10	10	Diamond	20' x 100'	NFR	1/bag, 16/pallet
SPD20FR10	10	Diamond	20' x 100'	FR	1/bag, 16/pallet
SPD40NFR	6	Diamond	40' x 100'	NFR	1/bag, 16/pallet
Anti-Static Non-Reinforced Poly					
ASP20FR	6	Non-Reinforced	20' x 100'	FR	1/bag, 20/pallet

Strong Weave 77

Woven Polyethylene Sheeting



Strong Weave 77

6 Mil Fire and Non-Fire Retardant

Strong Weave 77 boasts a 7x7 weave making it puncture and tear resistant. Durable, long-lasting and coated on both sides for added strength. Our material is UV-treated and designed to repel water. Available in clear, milky white and black colors. Construction, industrial, remediation and bridge applications. Strong Weave 77 is your job-site solution for temporary enclosure needs.

Picture Description:

6mil, Black Non-Fire Retardant Poly Sheeting
Size: 20' x 100'



- High strength polyethylene film with a tear & puncture resistant reinforced scrim
- Mil thickness: 6 mil
- Scrim: Premium 7x7 tape weave
- Temporary weather barrier, roof, wall & window
- Job-site containment enclosure
- Contains particulate matter on the job-site
- Weather resistant reinforced woven poly
- Mold & mildew resistant
- Durable & long lasting
- Non-Fire Retardant: Clear or Black
- Fire Retardant: Milky White
- Fire Retardant: NFPA 701 Test Method II

Specifications

Dimensions. Ratings. Part Information

Strong Weave 77 rolls are packaged in a clear poly bag. Each roll has a branded label with the product description, color, size and fire rating



Distribution Centers:

- New Jersey**
- Florida**
- Illinois**
- Texas**
- Washington State**
- California**



Product Features / Key Benefits

Strong Weave 77 is a durable polyethylene film that is durable and boasts a high tensile and puncture strength. Suitable for hot or cold weather, woven reinforced poly can be used in a wide variety of applications that require a tough, resistant film that resists tearing and changing weather conditions. Protect equipment, buildings, machinery, and job-sites from dust, dirt, wind, rain and snow.

Description/Item #	Mil	Size	Color	Fire Retardant	PKG
WP10FR	6	10' x 100'	Milky White	FR	1/bag, 42/pallet
WP20FR	6	20' X 100'	Milky White	FR	1/bag, 30/pallet
WP40FR	6	40' x 100'	Milky White	FR	1/bag, 16/pallet
WP10NFR	6	10' x 100'	Clear/Translucent	NFR	1/bag, 42/pallet
WP20NFR	6	20' X 100'	Clear/Translucent	NFR	1/bag, 20/pallet
WP40NFR	6	40' x 100'	Clear/Translucent	NFR	1/bag, 16/pallet
WPB20NFR	6	20' X 100'	Black	NFR	1/bag, 30/pallet
WPB40NFR	6	40' x 100'	Black	NFR	1/bag, 16/pallet

Accessories



Scaffold/Wind Clip
#SC11B - 100/ctn



Bungee Cords
#BC111 - 100/bag, 1000/ctn



Strong Lock Fastener
#StrongLock - 500/ctn



HD 10 Mil Poly Tape
#HDTAPE - 16/ctn

Curing Blankets

Strong Cure & Conkure



Picture Description:
Strong Cure 6' x 25' Blanket

Strong Cure Blanket

Bubble Cell Core

StrongCure is an 8x8 weave poly tarp with layered Bubble Cell cores. Each blanket is manufactured with grommets in every corner and again at the mid-points on the sides for ease of installation. StrongCure curing blankets are designed to hold up in low temperatures and to aid in the curing process. Fabricated to help insulate and control temperatures, our curing blankets are resistant to moisture and mildew. The core stays dry, allowing the blanket to control the temperature so concrete can achieve the maximum possible strength.

CONKURE™ Wet Curing Blanket - X80W

For Hot Weather Concrete Curing

Conkure™ Wet Curing Blanket consists of a highly absorbent synthetic needle punched fabric coated with a white reflective film. Unlike burlap, it will not rot or mildew. Conkure™ Blankets are lightweight and disposable making them an economical choice in concrete curing and yet are versatile and strong enough to be reused when cared for properly.

Picture Description:
Conkure 8' x 200 Wet Curing Blanket



StrongCure:

Size R-Value ASTM Standards

6' x 25', 2 Layer, 3/8" Bubble Cell = 2.2 ASTM C518 Thermal Resistance

6' x 25', 3 Layer, 1/2" Bubble Cell = 3.0 ASTM C518 Thermal Resistance

Conkure™:

Conkure™ Wet Curing Blanket meets and exceeds AASHTO M-171 and ASTM C-171, "Standard Specification for Sheet Materials for Curing Concrete" for moisture retention and daylight reflection.

Strong Block Containment Nets

Custom Debris Netting



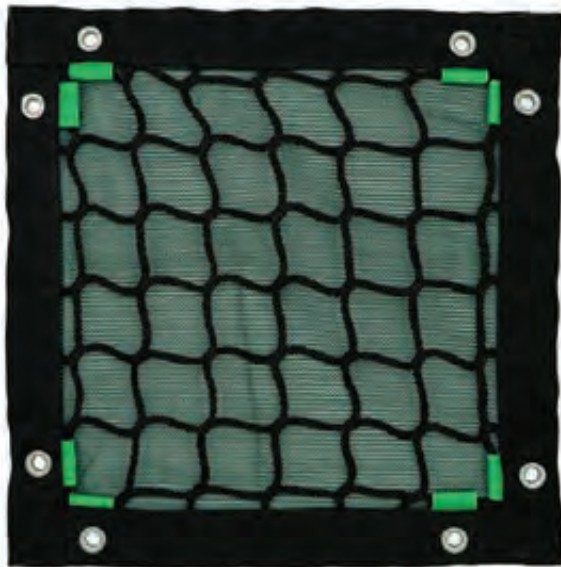
Picture Description: Strong Block Containment Net

Strong Block Containment Nets

Custom Debris Netting

Strong Block panels wrap directly around a debris source to prevent materials from becoming hazardous falling or flying objects. Be a step ahead of disaster and ensure a safe worksite for workers, pedestrians, and property. The dual-layer net design of Strong Block can contain up to 10,000 pounds of worksite debris from steel beams to fine particles.

Strong Block uses two net layers combined in a stacked configuration and joined using a bordering technique that provides maximum strength. Strong Block panels are designed to wrap a structure or be hung vertically or horizontally depending on the source and type of debris to be contained. protection.



- High tenacity knot-less polypropylene net with debris liner
- Base net: 2.0 or 2.5" square net
- Debris net liner: 3/8" or 1/16" options
- Net Options: 2,000 lb., 5,000 lb., 10,000 lb. rating
- Each order custom-made based on project requirements
- Perimeter edges include sewn reinforced webbing & grommets
- Meets ANSI A10.37 for debris containment during construction & demolition
- Complies with OSHA regulations for debris protection
- UV inhibitors for added life expectancy
- Fire Retardant nets available
- Five color options available

Specifications

Dimensions. Ratings. Part Information

Interconnected panels can span a wide area, utilizing many support points to maximize strength and protection. In addition, grommeted borders offer easy attachment points. High Tenacity Polypropylene (HTPP) knotless netting maintains a higher strength than equivalent knotted netting without the stretch of Nylon. HTPP netting is ideal for debris containment.



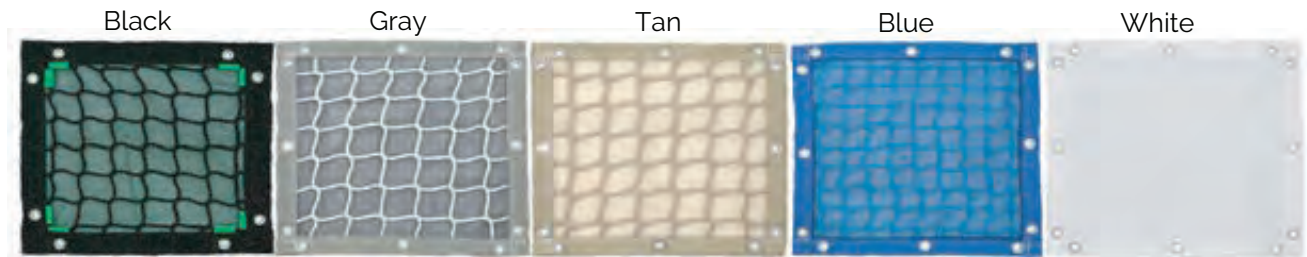
Distribution Centers:
 New Jersey
 Florida
 Illinois
 Texas
 Washington State
 California



Product Features / Key Benefits

Strong Block Containment Nets include a debris net liner for additional containment. The debris net liners are available in 3/8" polyester netting or 1/16" debris netting and come in an array of colors. The edges are fabricated with reinforced webbing and grommets for safe and secure installation. All **Strong Block Containment Nets** meets ANSI A10.37 for debris containment and construction demolition.

Description/Item #	Rating	Color	Base Net	Debris Net Liner	PKG
StrongBlock2K	2,000 LB	Black, Gray, Tan, Blue	2" knotless poly net	3/8" or 1/16" Net Liner	1/ctn
StrongBlock5K	5,000 LB	Black, Gray, Tan, Blue	2.5" knotless poly net	3/8" or 1/16" Net Liner	1/ctn
StrongBlock10K	10,000 LB	Black, Gray, Tan, Blue	2.5" knotless poly net	3/8" or 1/16" Net Liner	1/ctn



Accessories



Zinc Plated Steel Snap Hooks
 #SH80ZP, #SH100ZP & #SH120ZP
 100 pcs/ctn



Aircraft/Steel Cable



Cable/Zip Ties
 50 & 120 Lbs - 100 pcs/bag

Personnel Safety Nets

Fall Protection System



Picture Description Personnel Safety Netting
Size: Stock & Custom



Personnel Safety Nets

Fall Protection System

Personnel Safety Nets (PSNs) from Strong Man provide fall protection while meeting strict OSHA and ANSI requirements. Available in stock and custom sizes, Strong Man designs safety systems that provide maximum protection to your worksite.

The shock-absorbing diamond mesh of the PSN contains inhibitors that protect it from UV degradation. The PSN's high strength rating and optional fine mesh liner make it suitable to catch construction debris of all sizes - from paint chips to large, concrete spalling.

- Made from high tenacity knotted nylon net
- Base net: 3.5" diamond net
- Debris net liner: 1/16" pe or 3/8" polyester mesh
- PSNs are available with or without debris net liners.
- Included Steel snap clips staggered every 4 feet around perimeter
- Manufactured and compliance-tested to meet ANSI A10.11-2016 safety standards, PSNs are tested to a minimum impact rating of 17,500 pounds
- PSNs meet OSHA Standard 1926.501 Duty to fall protection, and OSHA 1926.502(c) Criteria for Safety Net Systems.
- Fire Retardant nets meets NFPA 701, available upon request
- High-rise building construction, elevator openings, industrial plants, refineries, oil platforms, bridges, tunnel and highway overpass construction applications
- Protects workers, pedestrians and adjacent buildings & properties

Specifications

Dimensions. Ratings. Part Information

We construct our safety nets using top-quality materials and assembly methods to assure the highest level of safety in the field, so that you can concentrate on the business of construction.



Distribution Centers:
New Jersey
Florida
Illinois
Texas
Washington State
California



Product Features / Key Benefits

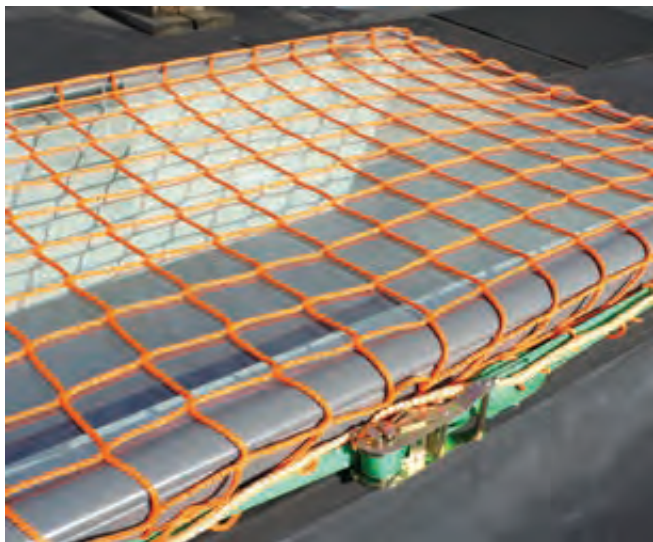
All PSNs include durable polypropylene 1/2" rope borders (rated to over 5,000 lb), corner attachment loops and approved steel snap clips which are staggered every 4 feet around the perimeter. In addition to our expertise in safety netting, we partner with a network of affiliates who fabricate, supply, and distribute perimeter system hardware that integrate seamlessly with our Personnel Netting.

Description/Item #	Net Size	Color	Debris Net Liner	KG
PSN1020L or PSN1020	10' X 20'	Black	70% mesh, optional	1/Box
PSN1515L or PSN1515	15' X 15'	Black	70% mesh, optional	1/Box
PSN1520L or PSN1520	15' X 20'	Black	70% mesh, optional	1/Box
PSN1525L or PSN1525	15' X 25'	Black	70% mesh, optional	1/Box
PSN1530L or PSN1530	15' X 30'	Black	70% mesh, optional	1/Box
PSN1540L or PSN1540	15' X 40'	Black	70% mesh, optional	1/Box
PSN172417L or PSN172717	17' X 24' X 17' (Corner)	Black	70% mesh, optional	1/Box
PSN2020L or PSN2020	20' X 20'	Black	70% mesh, optional	1/Box
PSN2025L or PSN2025	20' X 25'	Black	70% mesh, optional	1/Box
PSN2030L or PSN2030	20' X 30'	Black	70% mesh, optional	1/Box
PSN2040L or PSN2040	20' X 40'	Black	70% mesh, optional	1/Box
PSN2525L or PSN2525	25' X 25'	Black	70% mesh, optional	1/Box
PSN2550L or PSN2550	25' X 50'	Black	70% mesh, optional	1/Box
PSN3040L or PSN3040	30' X 40'	Black	70% mesh, optional	1/Box
PSN-Custom	Custom	Black	70% mesh, optional	1/Box

L = Nets With Liner

Strong Net Skylight Covers

Fall Protection/Prevention Netting



Picture Description: Strong Net Skylight Cover



Strong Net Skylight Covers

Fall Protection/Prevention

Strong Net Skylight Covers are a cost-effective, portable way to protect personnel performing roof work. Lightweight and durable, nets install quickly by fitting over skylights and hatch openings using adjustable strapping cinched with ratchets.

Strong Net Skylight Covers are designed for raised lip skylights or hatch openings that have a minimum 2-inch vertical lip surface. Easily reposition to ensure the safety workers and comply with OSHA regulations and of requirements.

- Base Net: Orange 3/16" High Tenacity Polypropylene (HTPP) 4" square mesh
- Reinforced with sewn rope borders.
- Highly resistant to abrasion and light weight
- Resistant to moisture and chemical exposure
- Includes with 11/2" green web strapping and attached ratchet.
- Easily transported and installed
- Compacts and stores quickly
- Stock and custom sizes available
- Complies to OSHA 1926.501(b)(1)
- Exceeds the load requirement of ANSI A1264.1
- Complies to Cal/OSHA Title 8, Subchapter 7, §3212

Specifications

Dimensions. Ratings. Part Information

The Strong Net Skylight Cover provides an enhanced level of safety to roof work when operations take personnel near unprotected or under-protected skylight or hatch openings. Strong Nets are clearly marked and packaged for easy shipping.



Distribution Centers:

- New Jersey
- Florida
- Illinois
- Texas
- Washington State
- California



Product Features / Key Benefits

Strong Net Skylight Covers is sized to the opening and tagged with associated net dimensions. No hand tools required for installation of the safety net cover. The Strong Net Skylight Cover is not intended for use as an anchorage device for rope access. The Strong Net Skylight Cover exceeds the load requirement of ANSI A1264.1, and the owners requirement to meet OSHA 1910.28(b)(3)(i) for protection of a roof opening. For construction purposes, installation of the safety net will meet the employers requirement for a safe walking/working surface, OSHA 1926.501(b)(1), and Cal/OSHA Title 8, Subchapter 7, §3212 floor openings, holes and skylights.

Description/Item #	Size	Color	Base Net	Base Net Thickness	PKG
StrongNet77	7' x 7'	Orange	4" square mesh HTTP	3/16"	1/ctn
StrongNet710	7' x 10'	Orange	4" square mesh HTTP	3/16"	1/ctn
StrongNet1010	10' x 10'	Orange	4" square mesh HTTP	3/16"	1/ctn
StrongNet-Custom	Custom	Orange	4" square mesh HTTP	3/16"	1/ctn

Accessories



Zinc Plated Steel Snap Hooks
#SH80ZP, #SH100ZP & #SH120ZP
100 pcs/ctn

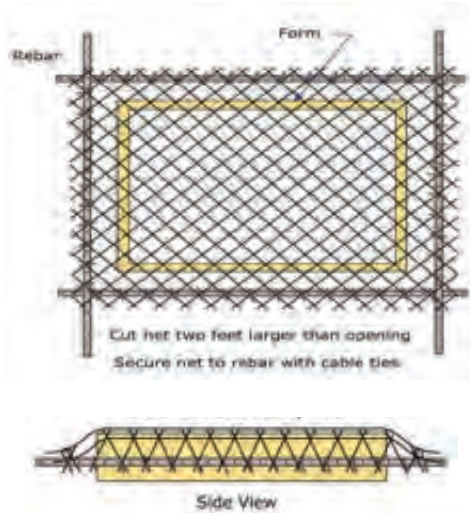


Bungee Cord
#BC111 - 100 pcs/bag, 10 bags/ctn

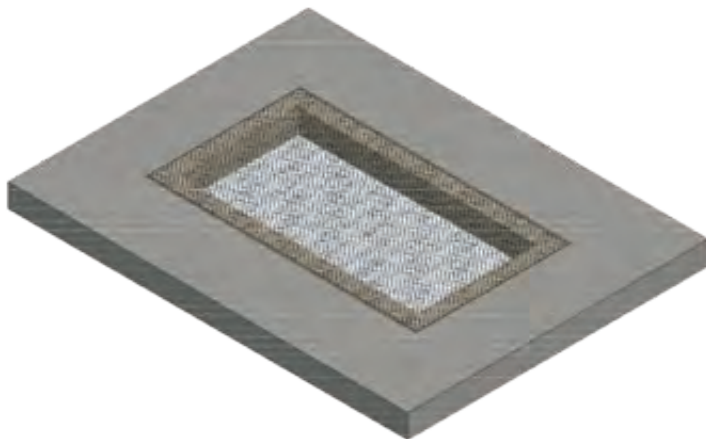


Cable/Zip Ties
50 & 120 Lbs - 100 pcs/bag

Pour-In-Place Netting & Strong Lift Cargo Nets



Picture Description: Pour-In-Place



Pour-In-Place

Fall Protection/Prevention

Pour-In-Place Safety Netting offers the ideal solution for fall protection in concrete construction applications involving floor openings with a risk of falling through. The four sides of the net are set into the surrounding poured concrete structure, such as in elevator shafts, and is cut away when construction is complete, and the opening is no longer a hazard.

Pour-In-Place nets are used over stairways, elevators, and duct openings for passive fall protection, supplementing or replacing temporary floor covers. The durable Nylon 6 netting absorbs a dynamic load of 1,300 lbs.

- PSN #120 knotted nylon safety net
- High Tenacity Nylon
- Secures open floor hazards
- Protects personnel from falls
- Contains material from fall throughs
- Sized on-site for a perfect fit
- Easily installed with hand tools
- Position over or under the floor opening form
- Easily removed when no longer required
- NFPA 701 Test Method 2
- Complies with OSHA 1926.501(b)(4)

Specifications

Dimensions. Ratings. Part Information

Comply with OSHA 1926.501(b)(4) Employees must be protected from fall-through hazards when the hole is more than six feet above the lower level. The Pour-in-Place net serves as a cover that satisfies the need for protection when installed per the instructions.

Pour-In-Place Netting & Strong Lift Cargo Nets



Picture Description: 20' x 20' Strong Lift Cargo Nets



Picture Description: 12' x 12' Strong Lift Cargo Nets

Strong Lift Cargo Nets

Material Handling

Strong Lift Cargo Nets are designed for bundling and lifting loads up to 6,000 lbs. They are lightweight and resistant to abrasion, moisture, and UV degradation. Cargo Lifting Nets are made from High Tenacity Polypropylene (HTPP) knotless netting with square mesh and a nylon peripheral rope with four reinforced loops. An optional four-point load sling made from four polyester web straps with steel load rings and safety hooks which enhances handling.

Strong Lift Cargo Nets use a lifting method that draws the corners of a net around its load into a gathered point to provide secure and balanced load carrying.

- Raschel Knotless Netting
- Maximum Payload
 - 12' x 12' Net = 3 ton US (2700 kg)
 - 20' x 20' Net = 2 ton US (1800 kg)
- High Tenacity Polypropylene (HTPP)
- Mesh Size*
 - 12' x 12' Net = 5.90 inch (150 mm)
 - 20' x 20' Net = 3.90 inch (100 mm)
- Nylon Perimeter Rope
- Rope Diameters:
 - 12' x 12' Net = 0.63 inch (16 mm)
 - 20' x 20' Net = 0.55 inch (14 mm)
- Loop Diameter = Approx. 6 inch (150 mm)
- Loop Protectors = Reinforced Fabric Tube

Specifications

Dimensions. Ratings. Part Information

Comply with OSHA 1926.501(b)(4) Employees must be protected from fall-through hazards when the hole is more than six feet above the lower level. The Pour-in-Place net serves as a cover that satisfies the need for protection when installed per the instructions.

* Square opening measured between mesh joints.



Distribution Centers:

- New Jersey
- Florida
- Illinois
- Texas
- Washington State
- California



Product Features / Key Benefits

Pour-In-Place Nets are placed across the opening, spanning a minimum of one foot on each side or until it extends past either piece of rebar, then fastened with nylon ties to the respective rebar for temporary fixation while the concrete is poured. Once dried, the net is locked securely until the opening is no longer an issue.

Strong Lift Cargo Nets can be used to easily and efficiently load, lift and move a variety of job-site material. Safe to use indoors or out, Strong Lift Cargo Nets are a safe & cost-effective way to move material from Point A to B.

Description/Item #	Style	Size	Color	Base Net	FR/NFR	PKG
PNPNET50	Pour-In-Place	8' x 50'	Black	High Tenacity Nylon	FR	1/bale or ctn
PNPNET100	Pour-In-Place	8' x 100'	Black	High Tenacity Nylon	FR	1/bale or ctn

Description/Item #	Style	Size	Color	Base Net	Max Load	PKG
HLN118S	Strong Lift	12' x 12'	Blue	Raschel Knotless Netting (HTTP)	3 Tons	1/bale or ctn
HLN2020	Strong Lift	20' x 20'	White	Raschel Knotless Netting (HTTP)	2 Tons	1/bale or ctn
HLN2064	Bridle Sling	72" each	Red	Polyester, woven two ply sling stitched	0-45° = 3.4 ton 46-60° = 2.4 ton	1/bale or ctn

Vapor Block Plus & Vapor Block by ViaFlex

20, 15 and 10 Mil



Picture Description:
20 Mil Vapor Block Plus
Size: 10' x 150'

Vapor Block Plus

20 Mil Gas & Moisture Barrier

VaporBlock® PLUS™ Series consists of seven-layer co-extruded barriers made from state-of-the-art polyethylene and EVOH resins to provide unmatched impact strength as well as superior resistance to gas and moisture transmission. VaporBlock Plus is a highly resilient under slab and wall barrier designed to restrict naturally occurring gases from migrating through the ground and concrete slab. It is more than 100 times less permeable than typical high-performance polyethylene vapor retarders against Methane, Radon and other harmful VOCs.



Vapor Block

10 & 15 Mil Gas & Moisture Barrier

VaporBlock® is a high-performance, under-slab vapor barrier designed to retard moisture migration through concrete slabs and walls to protect your structures from mold, mildews and fungi. It also protects flooring from increased moisture levels and is used as a component of radon mitigation systems to protect indoor air quality and occupant health.

Picture Description:
10 Mil Vapor Block Plus
Size: 12' x 200'

Specifications

Dimensions. Ratings. Part Information

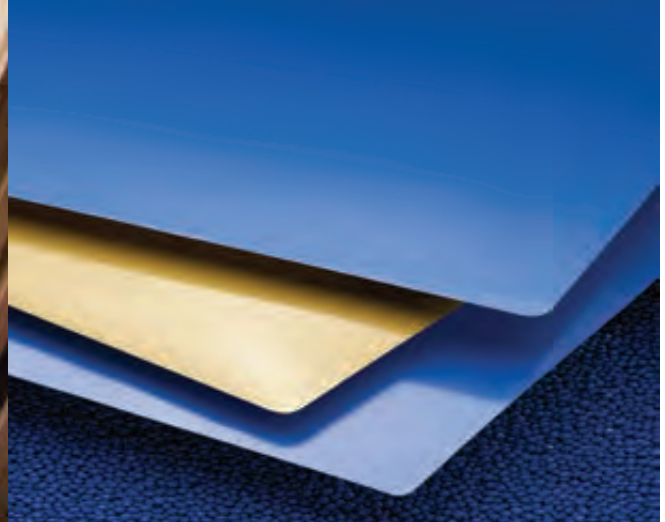
Vapor Bloc Plus is one of the most effective underslab gas barriers in the building industry today far exceeding ASTM E-1745 (Plastic Water Vapor Retarders Used in Contact with Soil or Granular Fill Under Concrete Slabs) Class A, B and C requirements. Available in a 20 (Class A) mil thicknesses designed to meet the most stringent requirements. VaporBlock® Plus™ 20 is produced within the strict guidelines of our ISO 9001 Certified Management System.

VaporBlock® is manufactured to strict conformance specifications under our ISO 9001 Certified Management System to consistently exceed ASTM standards and project expectations.



Distribution Centers:

- New Jersey**
- Florida**
- Illinois**
- Texas**
- Washington State**
- California**



Product Features / Key Benefits

VaporBlock® Plus™ 20 resists gas and moisture migration into the building envelop when properly installed to provide protection from toxic/harmful chemicals. It can be installed as part of a passive or active control system extending across the entire building including floors, walls and crawl spaces.

VaporBlock® is one of the most effective underslab vapor barriers on the market today! Benefits include ultra-low moisture vapor permeability, superior puncture resistance, high tensile tear strength & resistance to decay and degradation.

Description/Item #	ASTM Test Method	Size	Mil Thickness	PKG
VPB20	ASTM E-1745 Class A, B, C	10' x 150'	20 Mil	1/bag, 12/pallet
VB15	ASTM E-1745 Class A, B, C	12' x 200'	15 Mil	1/bag, 12/pallet
VB10	ASTM E-1745 Class A, B, C	15' x 200'	10 Mil	1/bag, 12/pallet

VaporBlock® Plus™ 20 & VaporBlock® Accessories



Butyl Seal Tape (#TP2BR)
2" x 50' - 12/ctn
Double-sided reinforced black butyl rubber tape to join overlapping panels together



VaporBoot™ Tape (#TBOOT)
2" x 16.4' - 12/ctn
Single-sided elastomeric butyl tape used to complete pipe installations



VaporBond™ Tape (#TVB4)
4" x 210' - 12/ctn
Single-sided tape with strong seaming capabilities with an "Easy Tear" feature



VaporSeal™ Tape (#TVSP4/#TVSP12)
4" x 160' - 12/ctn & 12" x 50' - 4/ctn
Single-sided 7-layer gas barrier tape with a release liner for ease of installation



POUR-N-SEAL™ (#PNS1G) 1 Gallon
Gray two part epoxy used to seal around multi-pipe penetrations



VaporBoot™ System (#VBOOT)
25 - VaporBoots
1 - VaporBoot Tape 2"x16.4'
1 - Vapor Bond Tape 4"x210'



VaporBoot™ Plus Preformed Pipe Boots (VBPBT)
40 Mil - 12/ctn

Custom Solutions: *Made To Order*



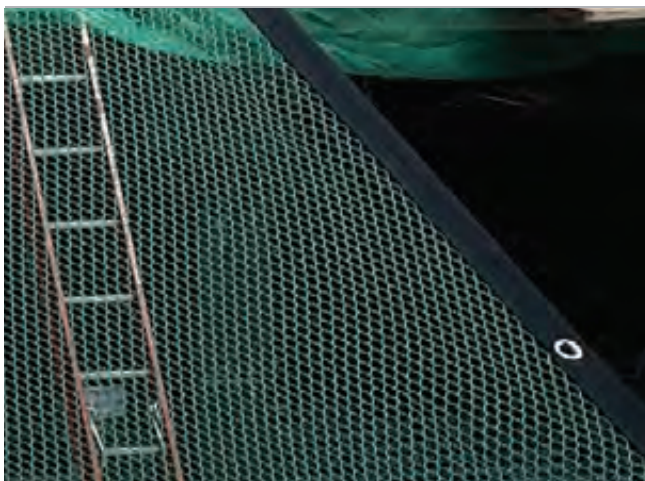
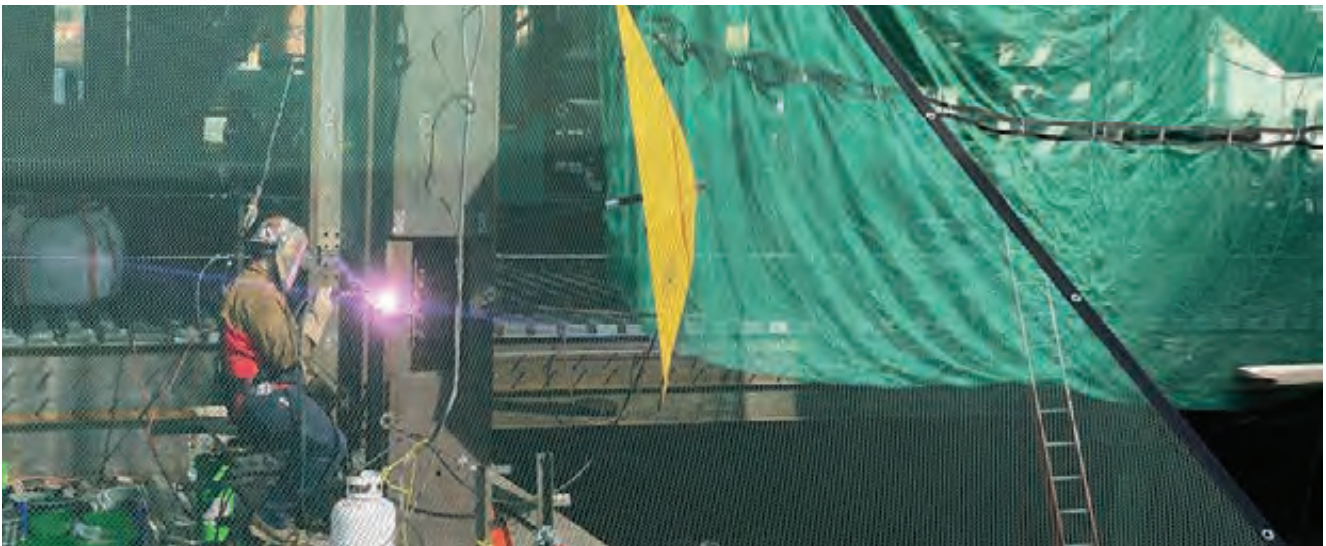
Custom Solutions

Made To Order

We offer a wide variety of Custom Solutions for nearly any application using our large inventory of products.

Fabricating Custom Tarps, Heat Sealing, Nettings, Vinyl, Welding Blankets, and Specialty Textiles. No job is too big or small for our team of professionals to give you exactly what you need.

#SOLUTIONS
#JOBSITESOLUTIONS
#CUSTOMSOLUTIONS
#CUSTOMFABRICATION
#MADETOORDER



Accessories, Hardware & Tape



Bungee Cords

Fasten to Tarps, Scaffold Wrap & Poly Sheeting
Superior strength elastic bungees with hook & toggle ends for easy of use.

Description	Item #	Size	Style	PKG
Bungee Cord	BC111	12"	Hook & Toggle	100/bag, 10 bags/ctn



Nylon Cable Ties

Used for fastening debris netting, mesh tarps, construction tarps and poly sheeting to guardrails, scaffolding, fencing, and other structures.

Description	Item #	Size	Lbs	PKG
Black Cable Tie	55090	11"	50	100/bag, 50 bags/ctn
White Cable Tie	55100	11"	50	100/bag, 50 bags/ctn
Black Cable Tie	55015	8"	120	100 bag, 30 bags/ctn
Black Cable Tie	55005	14"	120	100 bag, 20 bags/ctn
White Cable Tie	55070	14"	120	100 bag, 20 bags/ctn



Scaffold Wind Clips

Used to fasten to Poly Sheeting to scaffolding.
Fits 1-1/2" to 1-11/16" scaffolding frames. Reusable. Made from High Strength polyethylene.

Description	Item #	Size	PKG
Scaffold/WindClip	SC11B	11"	100/ctn



Strong Clip

The Strong Clip is designed to quickly & easily secure job-site netting to the 1/4 & 3/8" aircraft cable or wire rope, thereby reducing the risk of fabric failure.

Description	Item #	Size	PKG
Strong Clip Fastener	StrongClip	2.25" x 1.5"	50/bag, 2500/ctn



Zinc Plated Snap Hook

Rigging hardware for install of containment tarps, screens, debris netting and other enclosures.

Description	Item #	Jaw Opening	PKG
80 MM Zinc Plated Snap Hook	SH80ZP	3/8"	100/ctn
100 MM Zinc Plated Snap Hook	SH100ZP	7/16"	100/ctn
120 MM Zinc Plated Snap Hook	SH120ZP	9/16"	100/ctn

Accessories, Hardware & Tape



Strong Lock Poly Connector

Securely join poly sheeting together with reliable, heavy-duty Strong Lock Connectors. With a simple yet sturdy design, the Strong Lock Connectors twist through layers of sheeting and lock firmly in place.

Description	Item #	Length	PKG
-------------	--------	--------	-----

Strong Lock Connector	StrongLock	3" x 180'	500 pcs/ctn
-----------------------	------------	-----------	-------------



HD Poly Tape

9 Mil

Heavy-duty, polyethylene film, single coated tape with a synthetic rubber pressure sensitive adhesive. High tack with excellent bond strength.

Description	Item #	Length	PKG
-------------	--------	--------	-----

HD Poly Tape	HDTAPE	3" x 180'	16 rolls/ctn
--------------	--------	-----------	--------------



Yellow Caution Tape

According to OSHA 1910.144 (a)(3), yellow shall be the basic color for designating caution and for marking physical hazards such as striking against, tumbling, falling, tripping, and "caught in between".

Description	Item #	Length	PKG
-------------	--------	--------	-----

Caution Tape	YCTAPE	3' x 500'	12 rolls/ctn
--------------	--------	-----------	--------------



Red Danger Tape

The tape is 3" wide for maximum readability and visibility. Warn pedestrians and workers from a hazards. Our tape is appropriate for use in construction areas where risks are high and safety is the a priority.

Description	Item #	Length	PKG
-------------	--------	--------	-----

Danger Tape	RDTAPE	3' x 500'	12/ctn
-------------	--------	-----------	--------